

Great Rift Gazette

Summer 2012



Goodale's Cutoff

"We are traveling now through a volcanic country... all torn up and it is a very rough desert of a looking place."
– Nellie Slater

Craters of the Moon's volcanic landscape has long been impressive, though not always in a positive way.

Miss Slater didn't post those words on her Facebook page last summer. The young woman wrote them in her diary 150 years ago as she and a thousand others trudged to Oregon on Goodale's Cutoff. Last year over two hundred thousand people made the same trek to visit this "torn up volcanic country."

For Nellie, the trip through Craters of the Moon was likely the most difficult undertaking of her life. Her house rolled on rickety wooden wheels and brought all the chores that come with home: cooking meals, collecting wood for fuel, and tending the livestock.

Adding grief to challenge, her father died just days before reaching Craters of the Moon, his gravesite a few miles east of the lava fields. The loss surely added to Nellie's list of chores, not to mention her doubts about the path ahead.

Anxiety probably lurked in the back of each mind on the Goodale train. Today we think nothing of traveling alone cross-country, atop a web of smooth roads and under an umbrella of cell phone coverage. Emigrant families—with poor "roads" and no contact with the outside world—often travelled in teams of wagons. Safety in numbers offered insurance against trail hazards, not to mention encounters with potentially unfriendly natives.

If emigrants were uneasy about meeting Indians, Native Americans grew more frustrated at the sight of each new wagon. Decades of



Pioneers on Goodale's Cutoff (reenactment)

emigrants and their stock animals ate up grass and muddied water along the trail, scarce high desert resources needed by increasingly desperate Indian groups.

By the time of Nellie's journey, relations between the two groups had frayed badly. To deter confrontation, Goodale amassed over 330 wagons before passing through Craters of the Moon. He also brought his Shoshone wife, Jennie, to defuse tensions. A rolling town of nearly 1100, the wagon train was one of the largest to cross any section of the Oregon Trail. In doing so safely, the route became known as Goodale's Cutoff.

Enduring endless work and lurking apprehension, Nellie's curt description of Craters of the Moon is easy to understand; her travel anything but a vacation. Surely the Goodale travelers breathed easier as this blackened obstacle receded behind them.

Much has changed in the 150 years since. Then, emigrants pushed through in search of a better tomorrow. Today, travelers linger to explore hidden corners of a lava tube cave. But despite the years, travelers still pause here for only a brief visit, before pushing on to friendlier environs—and the impressions left are not soon forgotten.

Our Big Backyard

The Visitor Center, Loop Road and trails are Craters of the Moon's front yard – the part most visitors see and experience. But a whole other monument of wildlife, sagebrush, and elbow room awaits those willing to explore Craters of the Moon's backyard. Cooperatively managed by the National Park Service and the Bureau of Land Management (BLM), these two agencies are working together to enhance public service and protection of this landscape while retaining many of the traditional uses of the land.

The BLM is undertaking a variety of "backyard"

projects in this less-visited area of Craters of the Moon National Monument this summer. In addition to our usual road and facilities maintenance, grazing administration and other seasonal work, we will be implementing our Transportation Management Plan, and assessing sage-grouse habitat.

Last year over 50 miles of unneeded or redundant routes were removed from the BLM-managed portion of the monument. In many cases routes were simply disguised with rocks and other materials

"Backyard" continues on page 3

Peaks to Craters Scenic Byway

"The 140 miles that comprise the Peaks to Craters Scenic Byway reflect the march of time as ancient volcanoes and lava fields give way to the majestic peaks formed by forces long since past."



Peaks to Craters Scenic Byway Committee

As you travelled to Craters of the Moon you shared an ancient travel corridor with those who have come before. The Shoshone and Bannock tribes traveled through here on their annual migration into the mountains and to gather roots on the Camas Prairie. Later travelers included those who followed Goodale's Cutoff and left the "Pioneer" name on the mountains to the north. In 1903, Horatio Jackson became the first individual to drive an automobile through this area on the first successful journey of a "horseless carriage" across the nation. In modern times more than 200,000 visitors make the trek annually to visit this national park.

The historical significance and scenic beauty of this drive was recently recognized by a group of local citizens and the state of Idaho when it was designated as part of the Peaks to Craters Scenic Byway. Craters of the Moon staff were proud to work with local partners including the Lost Rivers Tourism Council to support this important designation. The National Park Service is also developing new interpretive signs that will be available at overlooks along the portion of the route within the Monument. We invite you to explore this scenic drive and consider linking up to the Sawtooth and Salmon River Byways for an unparalleled tour of scenic central Idaho. A free guide to all of Idaho's Byways is available at the visitor center.

As you travel the Peaks to Craters Scenic Byway please slow down and enjoy the view and make room for others who also travel this route, including the wild creatures who call this special place home.

*Dan Buckley, NPS Superintendent
Holly Hampton, BLM Monument Manager*

Inside Great Rift Gazette

Visitor Information ... 2

Junior Rangers ... 3

Walks and Talks ... 4

Accessibility

The visitor center, restrooms, and amphitheater are wheelchair accessible. Audio-visual presentations at the visitor center are also accessible for hearing and visually impaired people. The campground sidewalk, Snow Cone, and Devil's Orchard Trails are wheelchair accessible. There is also a wheelchair accessible campsite in the campground. Signs at each trailhead provide additional information about accessibility.



Backpacking

Most of the monument is designated Wilderness, or recommended to congress for Wilderness designation (Wilderness Study Areas), and is accessible only by foot. If you wish to stay overnight in the Wilderness area you must first obtain a free permit. These permits and maps of the area are available at the visitor center during business hours.

accessible only by foot. If you wish to stay overnight in the Wilderness area you must first obtain a free permit. These permits and maps of the area are available at the visitor center during business hours.

Camping

Camping is available by self-registration in the 51-site Lava Flow Campground. Water and restrooms are available but no hookups or dump station. Early registration is encouraged to claim your campsite of choice. A separate campground is available for groups of up to 30 people. Reservations for this facility must be made in advance by contacting monument staff at (208)527-1325.



Caving

To prevent the spread of white-nose syndrome, a fungal disease that has killed over a million bats since 2005, screening is required before entering any cave at Craters of the Moon. Pick up a permit at the Visitor Center or



Entrance Station and be prepared to answer the following questions:

- Have you visited a cave or mine since 2005?
- Do you have any items with you that entered into the caves or mines you previously visited? (e.g., clothing, shoes, flashlights, cameras, watches, phones, etc.)

Permits are valid for the five developed caves: Indian Tunnel, Dew Drop, Boy Scout, Beauty, and Buffalo Caves.

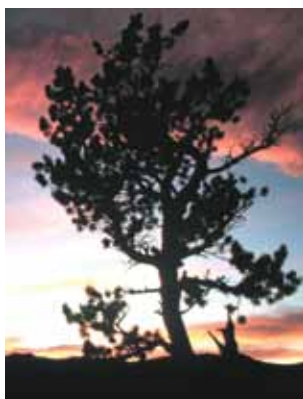
Before You Step Off the Trail

Please consider that these lava flows and features are thousands of years old and easily damaged by off-trail travel. In addition, park regulations prohibit off-trail travel around the North Crater Flow and Spatter Cones/Big Craters areas (see maps on trailhead signs to identify specific closure areas). You are also quite fragile and easily damaged by sharp and abrasive lava rock! Taking a fall will almost certainly result in cuts and scrapes. When hiking on trails we encourage you to slow down and use caution. Sturdy shoes (no sandals) and long pants are highly recommended. When exploring caves a hat or helmet for head protection and a flashlight are a must. Thank you for helping to protect your Monument and yourself!



Picnicking

Picnic tables are available at the visitor center and you are welcome to use any unoccupied table in the campground or Loop Road pull-outs.



sparse and slow growing in this high desert environment. Please help us protect them.

Fires

Wood fires are prohibited within the NPS Monument and Preserve (except within the fire ring for groups reserving the Group Campground). Grills have been provided at each campsite and charcoal is available for purchase at the visitor center store. Trees are

Off-Road Driving

Only street legal vehicles are allowed on the 7 mile Loop Road and no vehicles, including motorcycles and bicycles, are permitted off of designated roadways. Visitors planning a trip on dirt roads within the BLM National Monument should have a properly equipped, high clearance vehicle with good tires. Adequate water and emergency supplies, including a shovel and fire extinguisher, are highly recommended. Maps, travel tips, and road and weather updates are available at the visitor center or the BLM Shoshone Field Office (208) 732-7200.



attended. Please utilize the pet area near the Visitor Center and clean up after your pet.

Pets

Leashed pets are welcome on park roads and in the campground. For the protection of park wildlife and your pet, they may not be taken on park trails, into the backcountry, or left un-

Emergencies

If the visitor center is closed, contact any employee or call 911 from the pay phone in the visitor center or by cell phone where reception is available.



Recycling

The monument's recycling center is located in the campground across from the entrance station. Please recycle the following materials there:

- Glass
- Plastics #1-5
- Mixed paper (office paper, newspaper, etc.)
- Cardboard
- Aluminum & tin cans



Resource Protection

All natural features are protected by law and are to be left unchanged for others to enjoy. Let photographs and memories be your only souvenirs. Hunting is permitted only within the National Preserve and the BLM Monument in accordance with state law.

Services





Groceries, gas, and lodging are not available within the monument. Cold drinks and snacks are available from vending machines at the visitor center. There is also a public pay phone available in the breeze-way of the visitor center at all times.



Water

Drinking water is available only at the visitor center and the campground. Make sure to obtain water before venturing beyond these areas. Please utilize the service sink located in the campground's brick restroom to wash dishes or dump dish water. The nearest RV dump station is in Arco.



<h2 style="margin: 0;">Monument Partners</h2> <p style="margin: 0;">Who's responsible for protecting Craters of the Moon? Everyone!</p> <p style="margin: 0;">Here are some people who deserve special thanks:</p>	
	<p>Craters of the Moon Natural History Association (NHA)</p> <p>Since 1959 the NHA has supported "the scientific, educational, historical, and interpretive activities of the National Park Service" through sales of books and other publications. This newspaper is a tangible example of this support. Won't you join us? Inquire about the benefits of membership at the bookstore desk.</p>
	<p>Volunteers</p> <p>Last year 65 volunteers donated almost 3400 hours of service to Craters of the Moon. Do you have a talent that you would like to share? Both short and long term opportunities are available. Check out our website (www.nps.gov/crmo/supportyourpark/index.htm) or inquire at the visitor center desk for current opportunities.</p>
	<p>Geological Society of America (GSA)</p> <p>GSA's Geocorps program offers paid geoscience internships on public lands across America. Our understanding of the geologic history and features at Craters of the Moon has benefitted greatly from the work of these bright and motivated young scientists for over a decade.</p>
	<p>Student Conservation Association (SCA)</p> <p>The Student Conservation Association (SCA) is America's conservation corps. Members protect and restore national parks, marine sanctuaries, cultural landmarks and community green spaces in all 50 states. SCA's mission is to build the next generation of conservation leaders and inspire lifelong stewardship of our environment and communities by engaging young people in hands-on service to the land. Craters of the Moon, and many other national parks, have benefitted greatly from the hard work of SCA interns.</p>

Craters of the Moon is an out of this world place to be a kid!

Where else can you climb a volcano and explore a lava tube cave all in an afternoon? We invite you to get the most out of your visit to the "moon" by participating in our Junior Ranger programs.

Complete the fun activities in our free booklet and become a...



The only Lunar Ranger program in the Universe!

Also, join us for Junior Ranger Programs nightly at the campground amphitheater at 8 p.m.



Learn to be a Ranger by doing the things that Rangers do!

Creature Feature: Sage-grouse

Sage-grouse love sagebrush. They eat its leaves for food and build their nests under it. Females are speckled and blend in with their surroundings. Can you tell the sage-grouse from the rock below?



Continue your Junior Ranger adventure by becoming a WebRanger!

www.nps.gov/webrangers



Each spring sage-grouse visit large, open areas called leks, where males fan out their tail feathers and puff up their chests to attract a mate. Afterwards, they return to the safety of their sagebrush home.

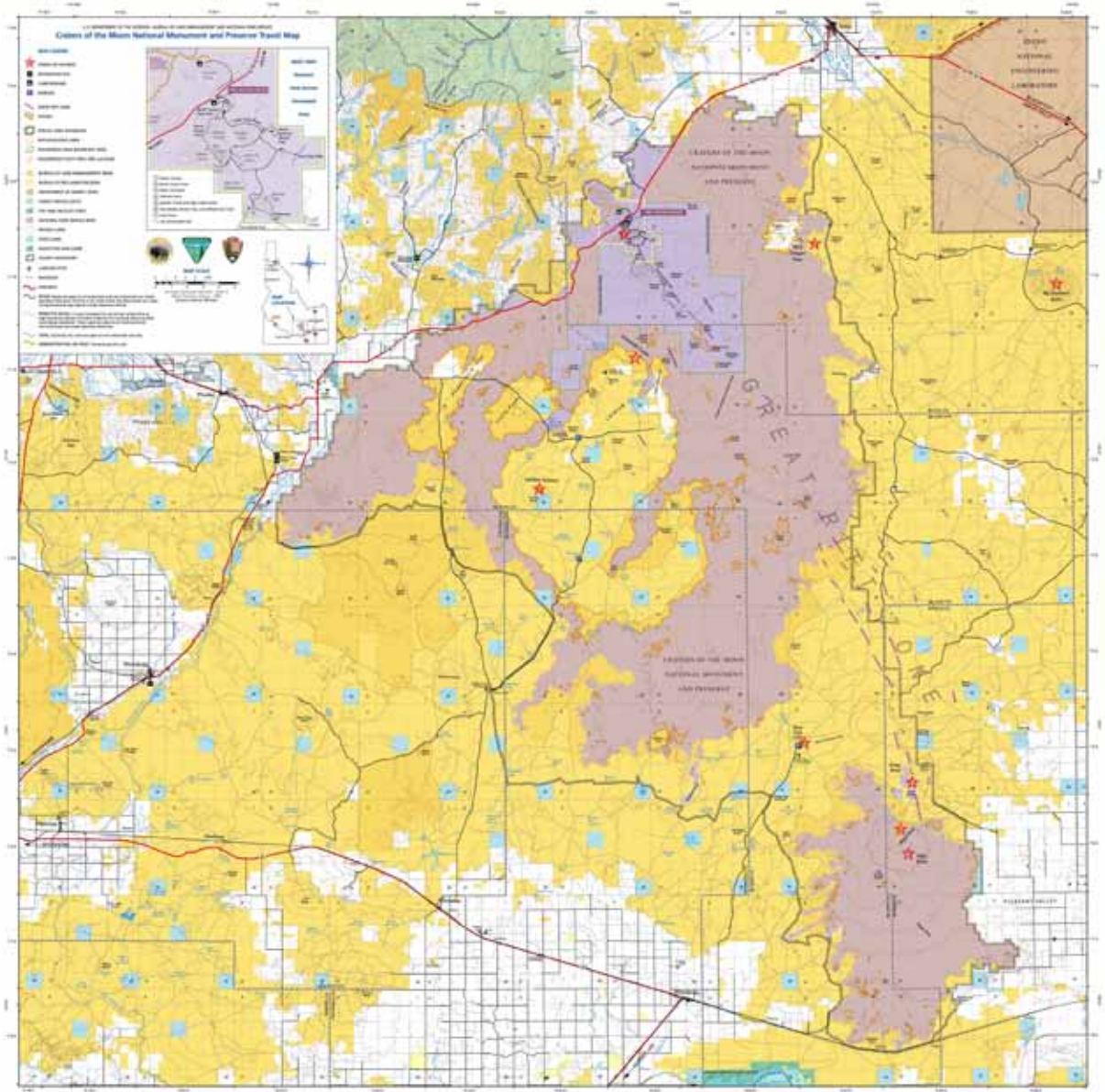
Backyard

continued from page 1

and then seeded with native plants thereby restoring wildlife habitat. For the seeding to be successful people must avoid driving on the route. Please stay on designated roads as you explore. This spring and early summer, crews will monitor last year's work to repair any areas identified that need more work.

A major investment of time and effort this year will be the start of the Sage-grouse Habitat Assessment Framework. Eleven newly hired seasonal employees will fan out across the Monument to identify and assess sage grouse habitat, implement conservation actions, and install monitoring studies. Data collected will be used to guide management of the health and condition of this important wildlife habitat.

An exciting and productive season is in the works for 2012. To explore the BLM Monument, pick up a copy of our free Travel Map, available at the NPS Visitor Center and the BLM office in Shoshone. Be sure to follow all the safety recommendations. Our big backyard has lots to see and do. Be sure to stop by and say hello. Have a great visit!



Nearby Businesses

<p>Pickle's Place On Hwy 20-26 – Arco, ID 208-527-9944 OPEN DAILY FROM 6 A.M. - 9 P.M. (winter) 6 A.M. - 10 P.M. (spring & fall) 6 A.M. - 11 P.M. (summer)</p>	<p>For info and reservations: 1-800-562-3408</p>	<p>Golden West CRIFE Brett & Darla Beard, Owners Enjoy Home Cooking & Grandma Zina's Pudding Open Mon.-Sat. 6 a.m.-9 p.m. (208) 527-8551 • 2431 Highway 20 • Arco</p>	<p>Castle's Corner Sub Sandwiches Burgers Pizza Deli Corner Wraps Milkshakes Carey, Idaho</p>
<p>Mountain View R.V. Park 705 W. Grand Ave. ~ Arco, Idaho 83213 208-527-3707</p>	<p>Craters of the Moon/ Arco KOA 2424 N 3000 W Arco, ID 83213 email: arcokoa@gmail.com</p>	<p>ADAMSON'S GENERAL STORE SHELL GAS STATION • PROPANE TIRE AND MECHANIC SHOP SPORTING GOODS • HARDWARE GROCERY STORE LIQUOR AND ICE COLD BEER Snack Bar and Grill (we use fresh ground hamburger ~ NEVER frozen patties) • Free RV Dump Clean Rest Rooms • Travel Information You can stop once and get everything you would ever need! 208-823-4314 • 20481 N. Main St. • Carey, ID</p>	<p>Deli SANDWICH SHOP Open 8:00 a.m. to 9:00 p.m. 7 Days a Week Arco, Idaho 83213 208-527-3757 Fax 208-527-3766 Sandwiches, Soups, Salads, Pizzas, Pitas, Milkshakes, Fruit Smoothies and More! EAT IN OR TAKE OUT DAILY SPECIALS</p>
<p>A&A MARKET Serving Lost River Valleys since 1946 ICE • DELI • GROCERIES • MEAT 218 N. Idaho – Arco, ID 83213 208-527-8594</p>	<p>NUMBER HILL GRILL 242 S. Front St. • Arco • 208-527-8224</p>	<p>SILVER CREEK CONVENIENCE STORE "Much more than a convenience store" Picabo, Idaho Owner – Sharon Purdy 208-788-3536 – Fax 788-3538 Fishing & Hunting Equipment & Licenses Gas & Diesel, 24 hrs. Deli & Lunches Room, Shower & Laundry Groceries & Snacks</p>	<p>Bargain Barn GAS • GROCERIES • LOTTERY State Liquor Store 216 S. Front St. – ARCO – 527-3402</p>

Walks and Talks June 8 – September 3



Make the most of your visit to this volcanic wonderland! Enjoy a film or join a Park Ranger for a talk, guided walk, or evening program. A variety of programs are offered each day.

Films Visitor Center, #1 on map
 “A Trip to the Moon” - Daily at 9:00 a.m. to 5:00 p.m. on the hour (25 min.)
 “Among the Craters of the Moon” - Daily at 9:30 a.m. to 4:30 p.m. on the half-hour (17 min.)

Begin at the visitor center (open 8 a.m. to 6 p.m. daily) to plan your visit and view exhibits and films that orient you to the area. Pressed for time?...View our new 7 minute introductory film in the museum.

Patio Talks Visitor Center, #1 on map
 Daily at 11:15 a.m., 1:45 p.m., 2:45 p.m. and 4:15 p.m. (15 min.)
 Enjoy a short presentation in a shady spot on the visitor center plaza. Check at the visitor center for topics.

Cave Walks Caves Area Trailhead, #7 on map
 Daily at 1:00 p.m. and 4:00 p.m.; also at 9:00 a.m. Fri.-Sun. (1½ hours, 1 mile)
 Follow the trail through seas of ropy lava into the strange underground world of a lava tube. Wear sturdy close-toed shoes, bring a flashlight, water and a cave permit.

Broken Top Hike Broken Top Loop Trailhead/Tree Molds parking lot, #6 on map
 Mon. - Thurs. at 9:00 a.m. (2 hours, 1.8 miles)
 Hike over, under and around a volcano on this fascinating hike. Bring sturdy shoes, water, a flashlight and a cave permit for exploring Buffalo Caves.

Evening Stroll Campground amphitheater
 Nightly at 7:00 p.m. (30 min., .25 mile)
 Take a short hike to a panoramic view of the North Crater Cinder Cone and the lava landscape that surrounds it.

Junior Rangers Campground amphitheater
 Nightly at 8:00 p.m. (30 min.)
 Learn to be a Ranger! Fun activities for kids ages 6-12. Parents are welcome too.

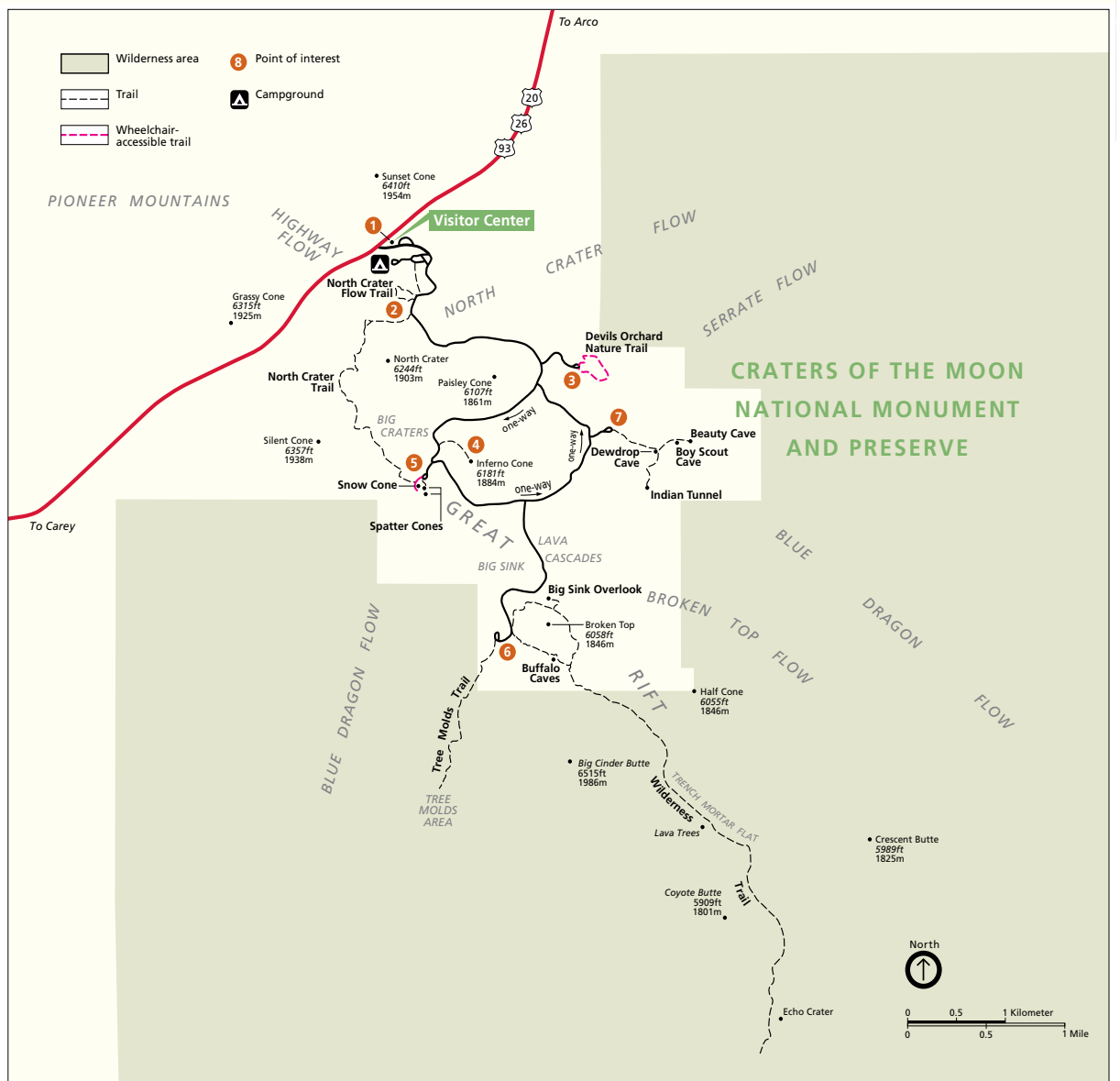
Evening Program Campground amphitheater
 Nightly at 9:30 p.m.; 9:00 p.m. in August and 8:30 p.m. in September (45 min.)
 Rangers present different presentations each night on the natural and cultural history of the park. Check at the visitor center for topics. Bring a jacket and carry a flashlight for the walk back to your campsite.

Special Programs Various locations
 Saturdays throughout the summer (times and distances vary)
 Explore the Craters of the Moon Wilderness, enjoy a hike beneath the full moon or join other volunteers for a service project. Sign up for these special hikes and events by giving us a call or stopping by the Visitor Center.

Wildflower Walks	June 9 & 16
Star Party	June 22 & 23
Service Saturday	June 23
Geology Hike	June 30
Evening Hike	July 7
Wilderness Hike	July 14
Service Saturday	July 21
Goodale's Cutoff	July 28
Full Moon Hike	August 4



Loop Drive Map



U.S. Department of the Interior Craters of the Moon National Monument and Preserve



Superintendent
 Dan Buckley

Monument Manager
 Holly Hampton

Mailing Address:
 P.O. Box 29
 Arco, ID 83213

400 W. F Street
 Shoshone, ID 83352

E-mail:
 crmo_information@nps.gov

id_so_information@blm.gov

Telephone:
 208-527-1335

208-732-7200

Website:
 www.nps.gov/crmo
 "Like Us" on Facebook

www.blm.gov/id/st/en/fo/shoshone/
 special_areas/Craters.html

EXPERIENCE YOUR AMERICA