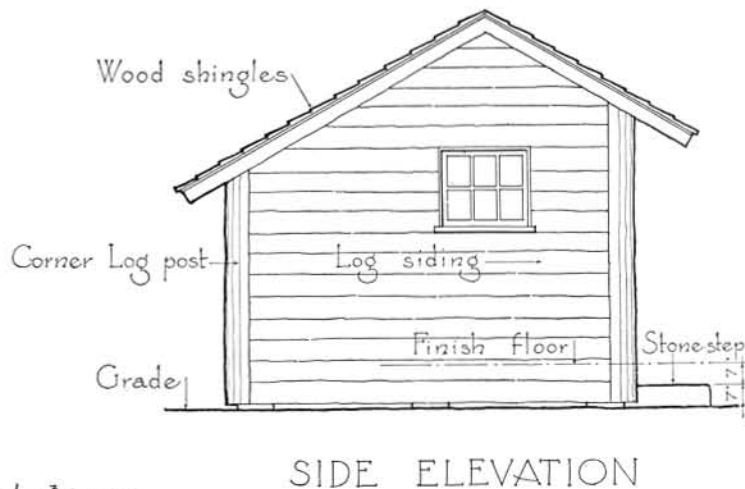
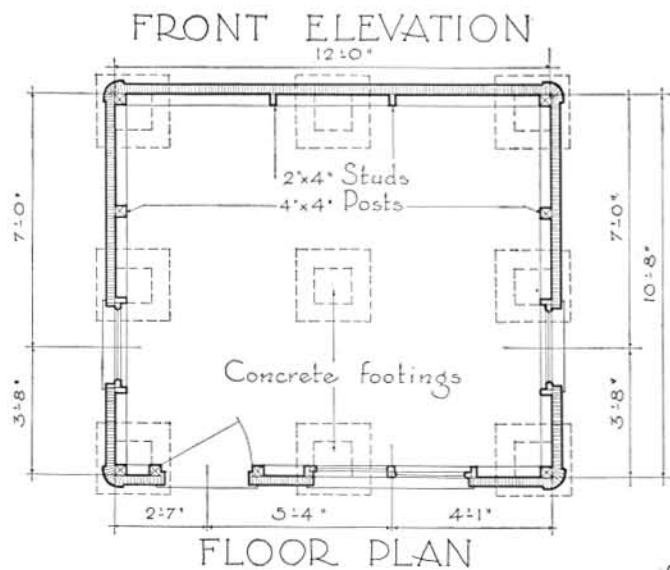
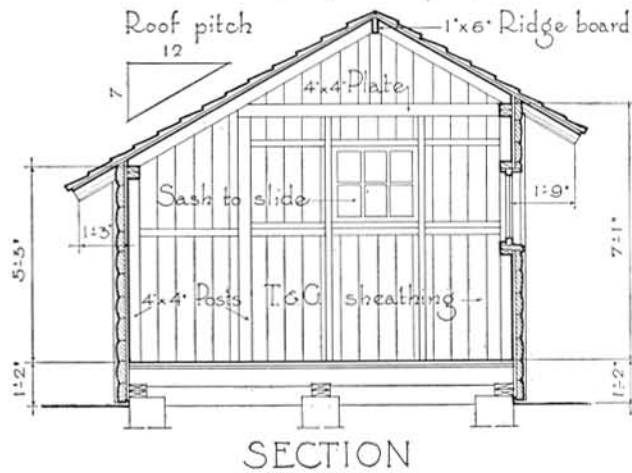
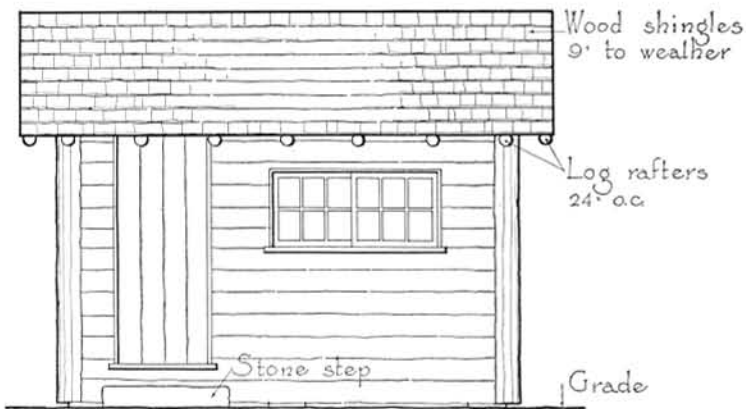
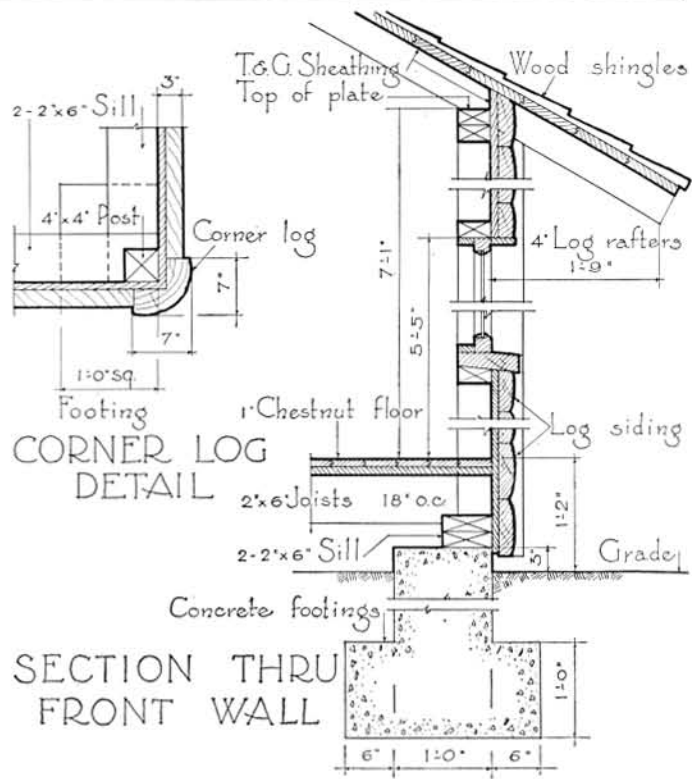




One Room Cabin - Letchworth State Park - New York

A wall closes the open side of the typical Adirondacks shelter and produces a cabin of the simplest form. Walls sided with so-called "log-siding" are a compromise with traditional primitive log structures and do not entirely sacrifice harmony with a woodland setting. The reduction in the amount of lumber required is not to be scorned lightly nor is the coincident item of lower cost.



Scale  $\frac{3}{16}'' = 1'-0''$