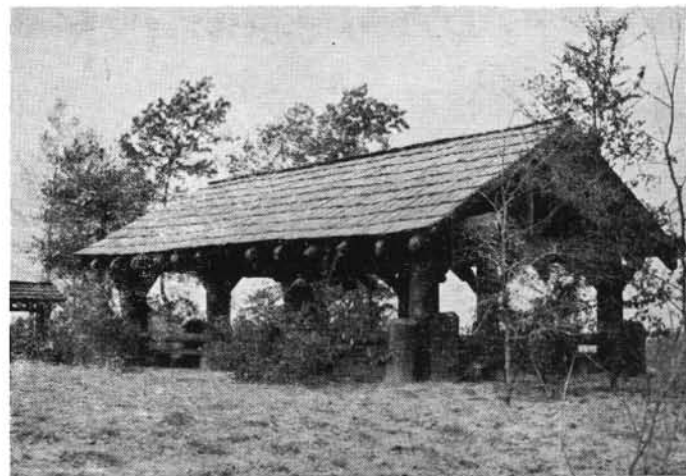
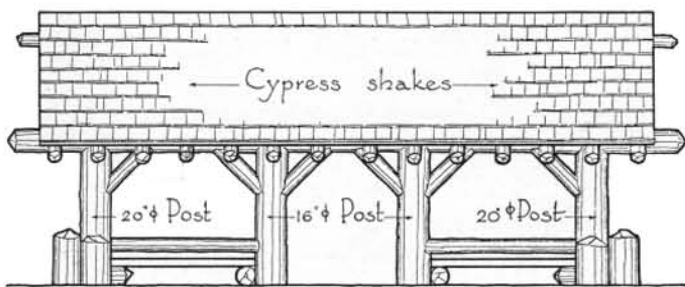


FLOOR PLAN



Shelter - Crowley's Ridge State Park - Arkansas

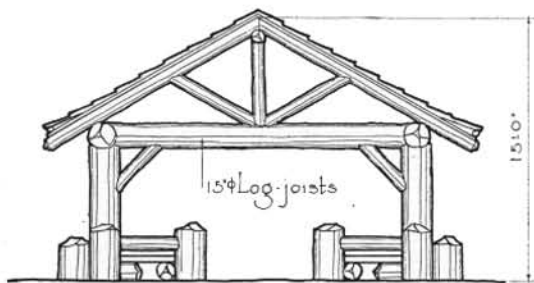
Here is no suggestion of fragility. The substantial structural members, the informality of their placing, the subtly freehand lines well-defined throughout, bring to this shelter an articulation quite its own. This, at the same time, is kept within limits that save it from appearing too forced or affected.



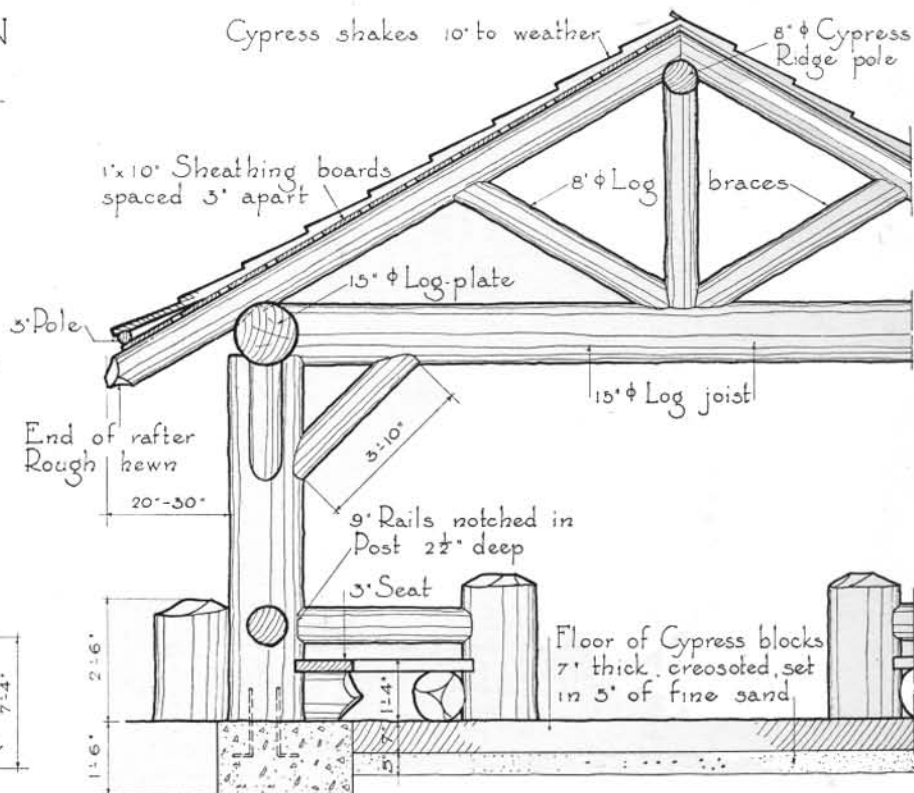
FRONT ELEVATION

Cypress shakes 10" to weather

8"  $\phi$  Cypress Ridge pole

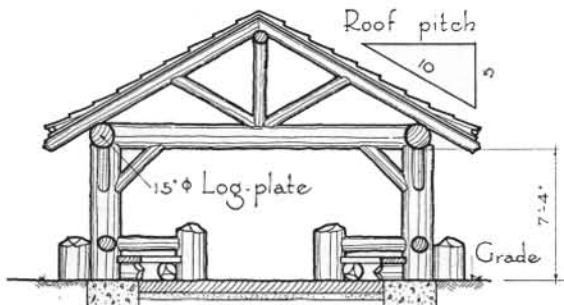


SIDE ELEVATION



DETAIL

Scale 1/4" = 1'-0"



SECTION

Scale 3/8" = 1'-0"