



El Baúl Radiológico

Homepage Downloads Area Videos

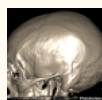
ARCHIVE

- ▼ 2015 (9)
 - ▼ March (2)
 - FIXTURE ANEFACTO (Annefact Artifact in MRI) b ...
 - VEINS basivertebral. (Basivertebral Veins: CT an ...
 - February (3)
 - January (4)
- 2014 (46)
- 2013 (52)
- 2012 (61)
- 2011 (56)

CONTRIBUTORS

- Victor Mazas Zorzano
- Luis Mazas Artasona

MOST POPULAR TOPICS



BOSS OCCIPITAL EXTERNAL (ossified Spur on the External

Occipital Protuberance) (Verkalkte Sporn auf der Externe Hinterhauptthöcker) by luis clubs Artasona. June 2012.

Experts say that the highest percentage of radiation received by humans comes from the radiological tests that looks ...



MAGNA ASPECT OF THE TANK IN COMPUTED TOMOGRAPHY

AND MAGNETIC RESONANCE TOMOGRAPHY (CT and MR Imaging of the Cisterna Magna) (Computertomographie und des Kernspintomographie Cisterna Magna) by luis clubs Artasona. January 2013.

With the name or Magna cerebellomedullary cistern (Figures 1, 2, 3 and 4), is

MONDAY, MARCH 16, 2015

FIXTURE ANEFACTO (Annefact Artifact in MRI) by luis clubs Artasona. March 2015

With the nickname "artifacts" used in the field of MRI, designating any stroke, stain or shading that appears unexpectedly and degrades the image quality of magnetic resonance tomography. There are many causes artifacts, some are physical and other techniques. This section shows some images with **artifacts anefacto** , explains why they occur and how they can be avoided.

The appearance of these artifacts is common in the scans of the spine and knee when multichannel surface antennas Phased Array and rapid pulse sequences, such as Fast Spin Echo are used. They are characterized by a bright and dark lines that appear all images of sagittal and coronal orientation. Appear white paint strokes which are arranged staggered in the center of the image, in that the phase coding (Figure 1). Are caused by interference signals which are generated outside the FOV and contours which are detected by any of the distal antenna modules. It is a technical error that are not properly selected modules corresponding to the anatomical structure being scanned antenna.

COUNTER

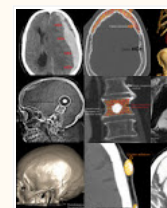
809875



TRANSLATOR

Select Language

THE TRUNK ASON



Clik on the image

FACEBOOK

The Radiological Cases



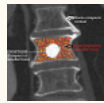
Name: El Baúl Radiológico
Status: La pensión media, en España, se cifra en 790,36 ...
Fans: 1394

INTERESTING BLO

AJNR Blog
AJNR Tweetchat Social Media in S Meetings - For A...
Tweetchat, AmyK... the Mayo Clinic andAiiRadmanM... University of Calif... Francisco joined... the ro ...
3 hours ago

Radiology HUV
Case number 7. F

known to a part of the subarachnoid space of the pit poster ...



Enostosis: ISLOTE BONE (Bone Island: CT and MRI Findings)

(enostosis îlot osseux of vertèbre.) By luis clubs Artasona. July 2012.

Enostosis or a bone island is a benign bone formation taking place in the cancellous bone of the vertebral bodies, the pelvi ...



ATTENUATION COEFFICIENT CT Scan (Attenuation Coefficient in

Computed Tomography) (Schwächungskoeffizient in der Computertomographie) (Coefficient di Attenuazione in the Tomografia Computerizzata) (Coefficient of Atenuação na Computerized Tomography) (Coefficient d'Attenuation in tomodensitométrie) by luis clubs Artasona. February 2011.

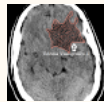
The attenuation suffered a beam of X-rays as it passes through the tissues was a physical phenomenon known in radiology, but not ...



ABSORBED DOSE OF RADIATION IN COMPUTED TOMOGRAPHY

(Radiation Absorbed Dose in Computed Tomography) by luis clubs Artasona. December 2012

(Do not do to others what you would not have them do unto you) ...



Closed Head CT Scan: vasogenic edema

(Craneoencephalic CT: vasogenic edema) by luis clubs Artasona. November 2013

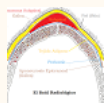
Cerebral edema is a pathological condition characterized by abnormal accumulation of fluid in any of the components ...



Iodinated contrast in CT Scan (Iodinated Contrast in Computed

Tomography) by luis clubs Artasona. December 2014.

The iodinated contrast is a chemical compound that is commonly used on many scans CT scan to incre ...



2) HEMATOMA Subgaleal: FINDINGS IN CT Scan and TRM (Subgaleal

Hematoma: CT and MRI Findings) (Subgaleale

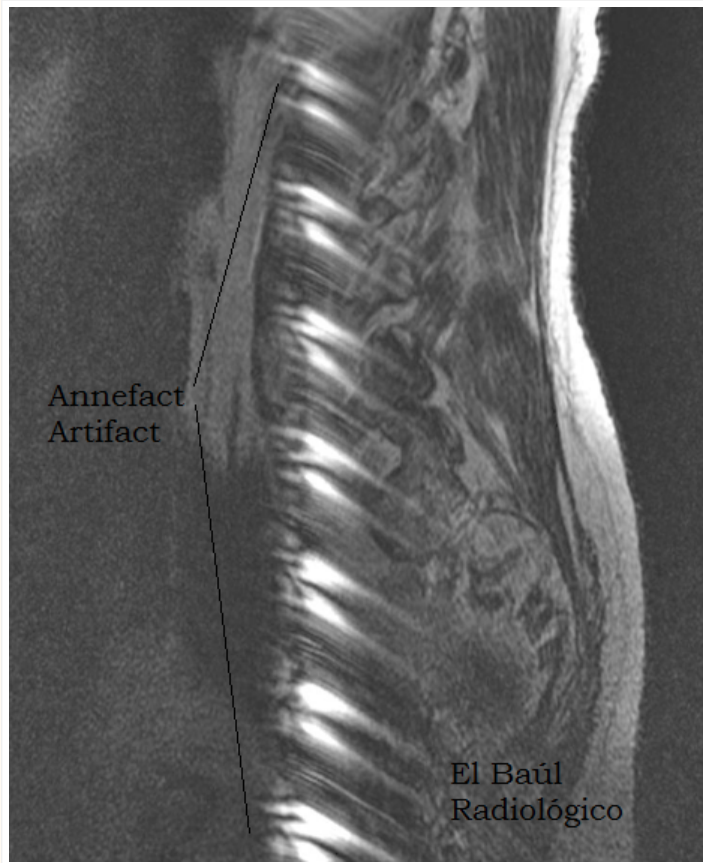


FIGURE 1) anefacto artifacts that are superimposed on the lumbosacral spine preventing viewing.

Key Words: MRI artifacts. Annefact Artifact. MRI.

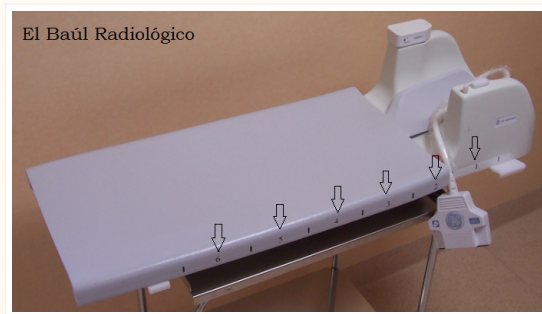


FIGURE 2) Antenna "Phased Array" column (Signa Excite 1'5T. GE). This type of antennas consist of several modules that collect reception signal RM individually. In this, there are six modules marked with numbers (arrows). As a rule, the first two are activated CS 12 , to perform a scan of the cervical spine. For the spine should be activated following TS 34 and lumbosacral, the remaining LS 56. But not all patients are equally high, so sometimes you have to make corrections to this general rule not to occur artifacts. Here comes in the Technical expertise and quality control Medical Resident.



sci
you
39'
Ma
fror
low
radiating to the lo
although predomi
light, which has b
progressive ...
5 hours ago

The sphenoid
my of the
ltdetectoi
the Radio!
to Know!
Anatomy Cardiac
study by the mag
RadioGraphics 20
20 hours ago

RADIOLOGIA M
nosoloradiología:
Goytisolo (speect
- could not resist
temptation to put
1 day ago

RADIOLOGY TR
radiology Networl
you determine ca
on chest x to PA-
ANSWER: ... - He
determine cardioc
chest x to PA-ray
http://goo.gl/6ymf
courtesy of Dr lar
http://ift.tt/1DfFbR
Radiology Sig ...
2 days ago

Blog
Caceres' Corner
(Update: Solution
Friends, As Dr. R
Mentioned in the
Diploma case, it i
how old school R
survived without
saw one suc ...
5 days ago

RADIATION SE:
ARAGONESAS
Massive localized
lymphedema - a c
massive localized
lymphedema is pr
1 week ago

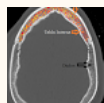
Neuroradiology
Fro
sut
whi
cys
MR
ma
headache. With E
contrast shows: M
hyper intense wel
cystic foci in right
cortical sub white
1 week ago

Aragones Soc
Radiology
1st
Dia
Me
Dig
Pat
Ne

Dear colleagues:
information bookl
Diagnostic Metho

Hämátome: CT-Befunde). by luis clubs Artasona. February 2014.

(Dedicated to all residents Medical Technicians and forming the first "trench" containment, in the solitude of any n ...



Idiopathic intracranial

HYPEROSTOSIS (hyperostosis Front Inside) (hyperostosis Diffuse intracranial) (hyperostosis frontalis Interna) (Internal Cranial hyperostosis) (Diffuse Cranial hyperostosis) by luis clubs Artasona. June 2012

The Internal idiopathic cranial hyperostosis is a common finding that can be seen on CT scan images ...



SATURATED FAT SPECTRAL (Fat Sat) OR STREAM STIR. WHAT TO

CHOOSE? (Suppression of Fat Signal (Fat Sat) or SEQUENCE STIR. Which one we choose?) By luis clubs Artasona. July 2014.

In scan mode Magnetic Resonance Imaging (MRI) various physical processes that are used to neutralize the sign ...

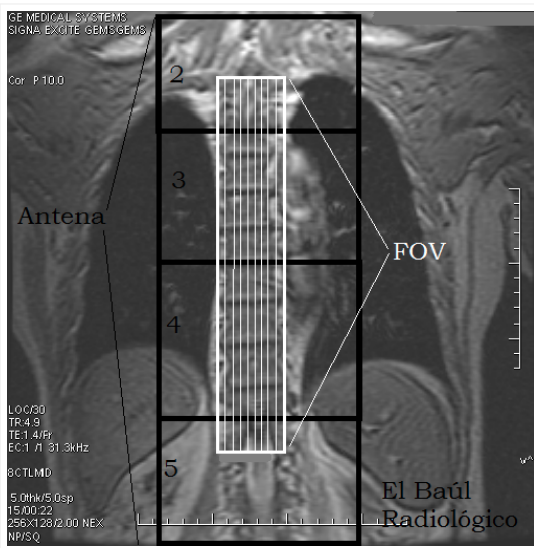


FIGURE 3) In this figurative recreation are marked antenna modules 2,3,4 and 5. 1 to 6 are not seen but are there. The FOV marked by the Technical covers the dorsal region, both for proper study should enable the modules 23 and 4, so that the artifact anefacto does not occur.



FIGURE 4) However enabled, incorrectly, improper CS123 modules (yellow arrow) to the spine. The result is a lack of signal at the lower portion of the image (module 4 because he has collected the anatomical region that signal is not activated) and the occurrence of an artifact anefacto bright produced by spurious signals collected by Module 1 of the antenna is outside the contours of the FOV but turned How can I fix this? For selecting the appropriate modules and repeating the scan. (Four minutes of time).

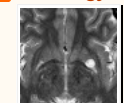
In the following images (Figures 5,6,7 and 8) anefacto artifact in columns on the left is appreciated, because they are selected incorrectly modules CS 123 (yellow arrows) dela Phased Array Antenna. however, in the left columns artifact disappears because it has been repeated CT scan activating the correct modules 234 of the antenna (white arrows).

Digestive Patholo Neoplasms", orga ... 1 week ago

consultadeneur Primary intraventr hemorrhage - Priu intraventricular he (IVH) is only the p blood in the ventr system as shown The I ... 1 week ago

H SIDEWAYS and Vinazo with great best price - We ta bars in downtown and may not pay attention to some neighborhoods th Game ... 3 weeks ago

Radiology MRI



Sm Per Sp: this per spa typical location in parts of the basal The "smiling face small Vessels. C 3 weeks ago

Radiopaedia BI New playlist featu Have Been puttin Tremendous amc into Improving ou and creating a co format to present cases, with full s. 4 weeks ago

neuroimagen.in Nomenclature lun pathology - Today pleased to recom class citation mus professionals inv patient care ... 1 month ago

ToricoRad



Ca: Ma Re: Sar (R4 I. F Bedoya.. 1 month ago

MRI and Medica



MR cur clin anc De: tecl Positron Emissio Tomography com magnetic resonar (PET-MRI) is an e technology Recer Proposed to b ... 1 year ago

MRISAFETY.CC

AERIAL VIEW C ZARAGOZA

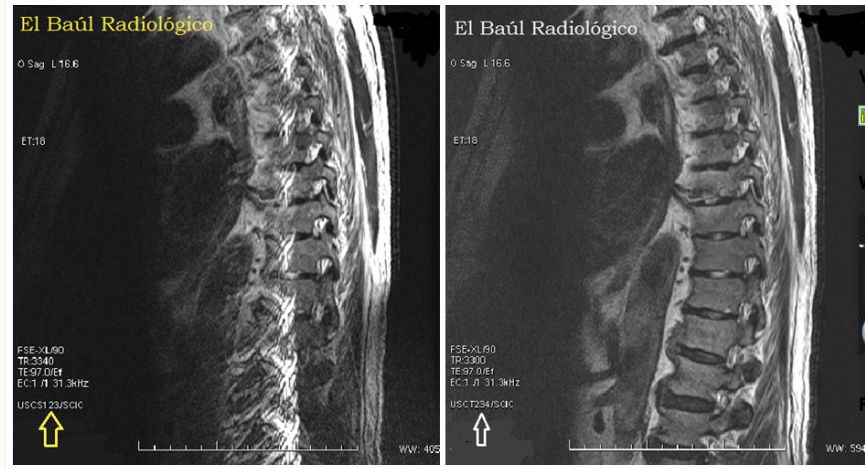


FIGURE 5)

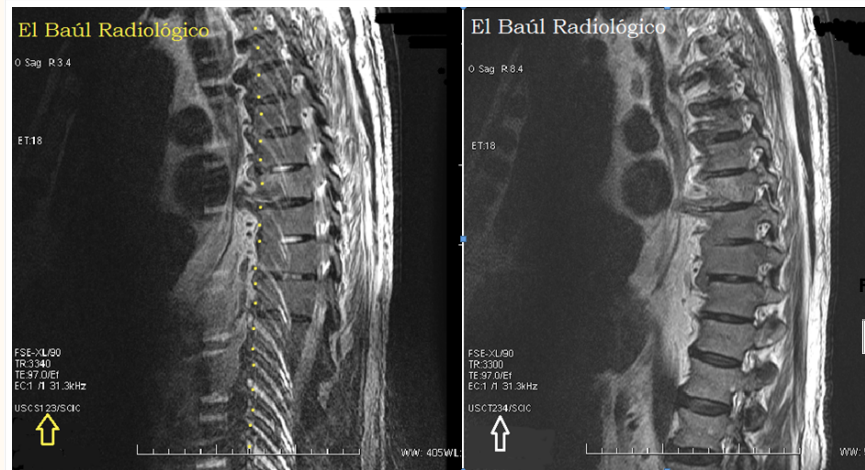


FIGURE 6)

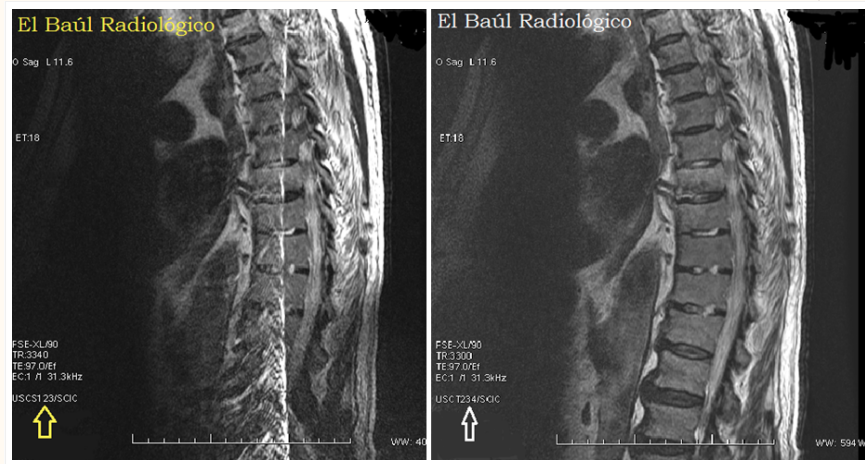


FIGURE 7)

BIBLIOGRAPHY:

- 1) Graves MJ, Mitchell DG. Body MRI artifacts in clinical practice: a physicist's and radiologist's perspective. J Magn Reson Imaging 2013; 38: 269-287.
- 2) Zhuo J, Gullapalli RP. AAPM / RSNA physics tutorial for residents. MR artifacts, safety and quality control. Radiographics 2006; 26: 275-297.

VISITS THE WORLD

MEESTATS

WORLD MAP

FOLLOWERS

Participar en e

Google Friend Connect

Miembros (66) Más

¿Ya eres miembro? Inici

FOLLOW US BY EI

Email address...

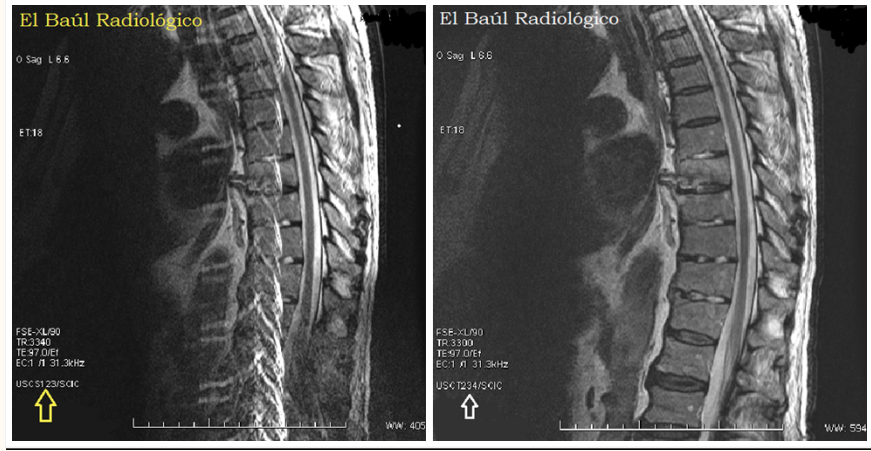


FIGURE 8)

Posted by Luis Mazas Artasona on 3/16/2015 9:14:00 PM

[M](#) [e](#) [t](#) [f](#) [p](#) [g+](#) +1 [Recomendar esto en Google](#)

No comments:

Post a Comment

Introduce tu comentario...

Comentar como: Cuenta de Gooq ↕

[Publicar](#) [Vista previa](#)

Links to this post

[Link](#)

[Home](#)

[Older Post](#)

Subscribe to: [Post Comments \(Atom\)](#)

Template images by [borchee](#) . Powered by [Blogger](#) .