

Micon ANCHORAGE TESTING MACHINE

DGMS Circular No.19 of 1974 has advised that mines adopting Roof stitching with old haulage ropes and roof bolting should be equipped with reliable and tested equipment for carrying out the Torque Test, Anchorage Test and Sag Test.

DGMS Circular No. DGMS(Tech)(S&T)Circular No 5 of 2002.has modified bridge assembly and advised the mines to procure Anchorage testing machines of proper design.

Rock Bolt tester is a hydraulic device for performing rope or bolt pull test to measure their load bearing capacity or anchor-ability.

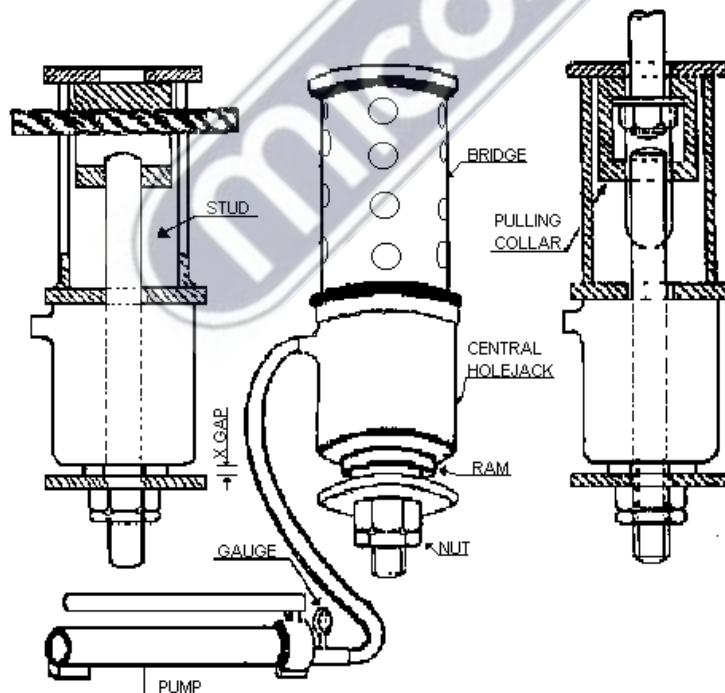
Anchorage testing equipment comprises of :-

- 1) Hydraulic Jack with Central Hole.
- 2) Suitable Hydraulic Hand Pump
- 3) Hydraulic Pressure Gauge
- 4) Hydraulic Heavy Duty Hose
- 5) Modified Bridge Assembly as per DGMS Circular No.5 of 2002
- 6) Pulling Head for Bolt & Rope, Stud Etc

PROCEDURE

Assembly for testing is done as shown in drawing. Forces are applied in steps of 500 kg and corresponding displacement is recorded by reading gap 'X'. When there is bolt displacement of 10 mm or yielding of rope without corresponding increases in load, the dial gauge reading can be considered as the anchorage capacity of the strata.

It is suggested that a minimum of five tonne anchorage strength is required with a displacement of 10 mm to try bolting in any strata. Rope stitching Anchorage strength will be about 4-5 tonne for 20 mm rope and 6-7 tonne for 22 mm rope.



Note: Glycerin filled with maximum pointer pressure Gauge also available

Manufactured, Sold & Serviced by:



Micon Engineers

25 NETAJI SUBHAS ROAD, KOLKATA 700001
PHONE : 033-2230-9138/8378, FAX : 033-2230-8378
Email : info@miconeng.com, website: www.miconeng.com