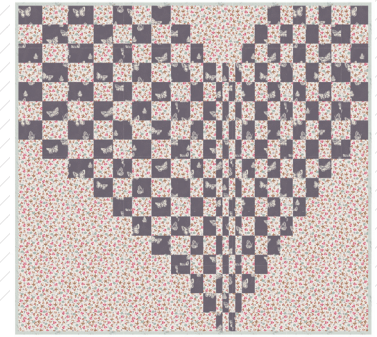






# Butterfly

AMYSINIBALDI

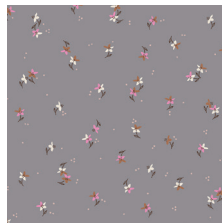


FABRICS DESIGNED BY AMY SINIBALDI

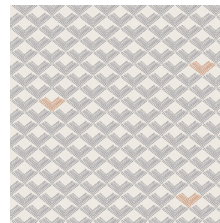
PLAY DATE



DHS-1080  
TIPTOE FROLIC



DHS-1081  
WALTZ MOONLIT



DHS-1082  
ROOFTILES SLATE



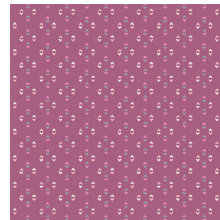
DHS-1083  
FLUTTERDUST STARRY



DHS-1084  
JOLIE PETAL



DHS-1085  
MEADOW FIELD



DHS-1086  
LUCY MAUVE



DHS-1087  
PRAIRIE DOT FRESH

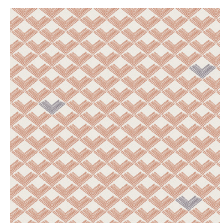
TEA TIME



DHS-2080  
TIPTOE DUSK



DHS-2081  
WALTZ SUNLIT



DHS-2082  
ROOFTILES CLAY



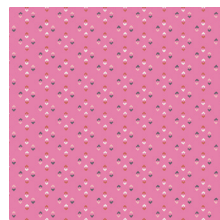
DHS-2083  
FLUTTERDUST HAZE



DHS-2084  
JOLIE FRESH



DHS-2085  
MEADOW POSY



DHS-2086  
LUCY ROSE



DHS-2087  
PRAIRIE DOT SERENE







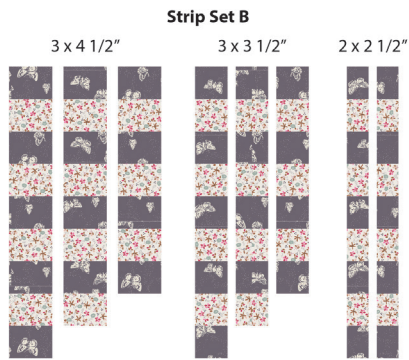
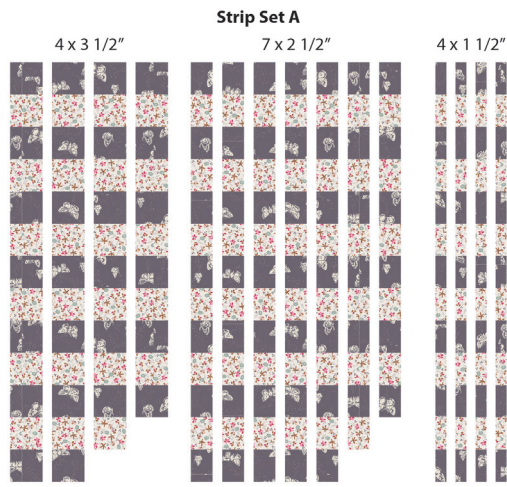


DIAGRAM 1

### Block A

- Take two (2)  $3\frac{1}{2}$ " x  $1\frac{1}{2}$ " rectangles from fabric **B**, two (2)  $9\frac{1}{2}$ " x  $1\frac{1}{2}$ " rectangles from fabric **B**, and two (2)  $12\frac{1}{2}$ " x  $1\frac{1}{2}$ " rectangles from fabric **B**.
- Take four (4)  $1\frac{1}{2}$ " strips from **Strip Set A**.
- Join them following Diagram 2.

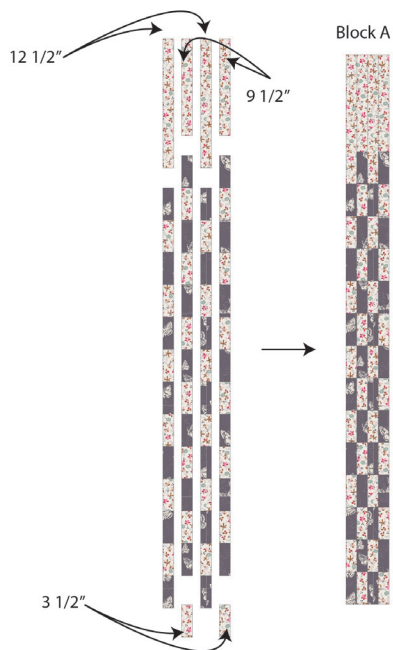


DIAGRAM 2

### Block B and Block C

- Take two (2)  $3\frac{1}{2}$ " x  $2\frac{1}{2}$ " rectangles from fabric **B**, four (4)  $6\frac{1}{2}$ " x  $2\frac{1}{2}$ " rectangles from fabric **B**, two (2)  $9\frac{1}{2}$ " x  $2\frac{1}{2}$ " rectangles from fabric **B**, one (1)  $12\frac{1}{2}$ " x  $2\frac{1}{2}$ " rectangle from fabric **B**, one (1)  $15\frac{1}{2}$ " x  $2\frac{1}{2}$ " rectangle from fabric **B**, and one (1)  $18\frac{1}{2}$ " x  $2\frac{1}{2}$ " rectangle from fabric **B**.
- Take seven (7)  $2\frac{1}{2}$ " strips from **Strip Set A**.
- For fabric placement and attachment follow Diagram 3.

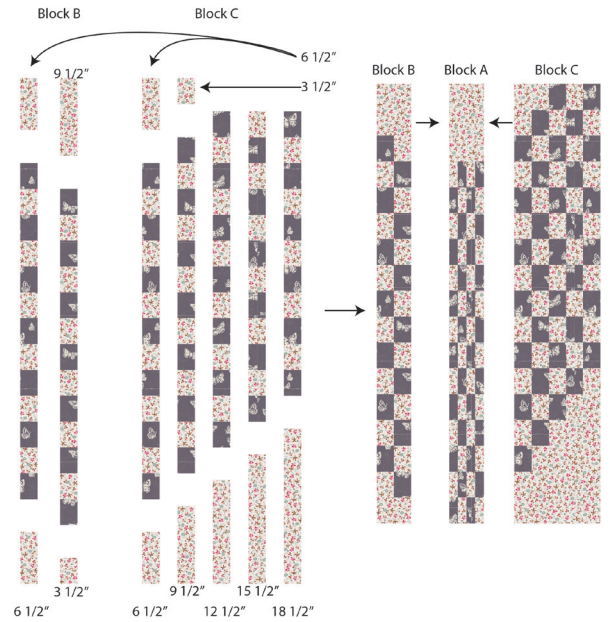


DIAGRAM 3

### Block D

- Take one (1)  $3\frac{1}{2}$ " x  $3\frac{1}{2}$ " square from fabric **B**, one (1)  $9\frac{1}{2}$ " x  $3\frac{1}{2}$ " rectangle from fabric **B**, one (1)  $12\frac{1}{2}$ " x  $3\frac{1}{2}$ " rectangle from fabric **B**, one (1)  $15\frac{1}{2}$ " x  $3\frac{1}{2}$ " rectangle from fabric **B**, and one (1)  $18\frac{1}{2}$ " x  $3\frac{1}{2}$ " rectangle from fabric **B**.
- Take four (4)  $3\frac{1}{2}$ " strips from **Strip Set A**.
- For fabric placement and attachment follow Diagram 4.



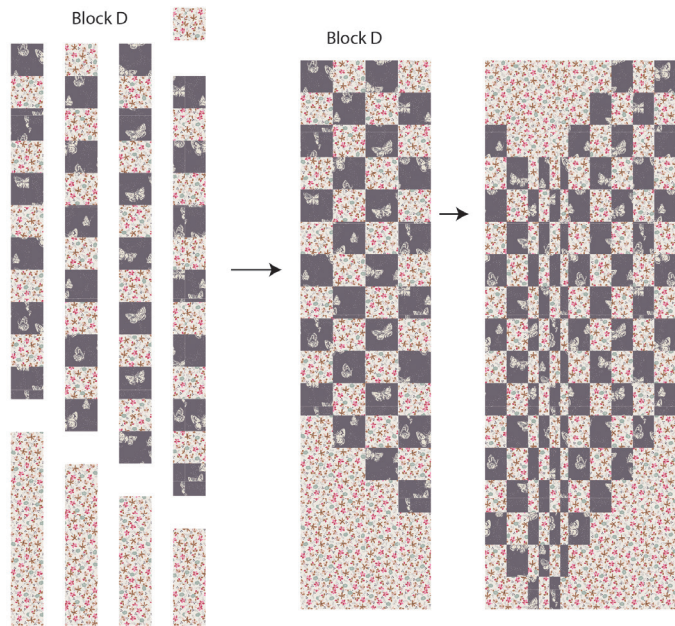


DIAGRAM 4

### Block E and Block F

- Take one (1)  $3\frac{1}{2}'' \times 2\frac{1}{2}''$  rectangle from fabric **B**, one (1)  $3\frac{1}{2}'' \times 3\frac{1}{2}''$  square from fabric **B**, one (1)  $2\frac{1}{2}'' \times 2\frac{1}{2}''$  square from fabric **B**, one (1)  $24\frac{1}{2}'' \times 2\frac{1}{2}''$  rectangle from fabric **B**, one (1)  $21\frac{1}{2}'' \times 3\frac{1}{2}''$  rectangle from fabric **B**, one (1)  $27\frac{1}{2}'' \times 3\frac{1}{2}''$  rectangle from fabric **B**, and one (1)  $30\frac{1}{2}'' \times 3\frac{1}{2}''$  rectangle from fabric **B**.
- Take two (2)  $2\frac{1}{2}''$  strips from **Strip Set B** and three (3)  $3\frac{1}{2}''$  strips from **Strip Set B**.
- Join them following the diagram, and then to blocks A, B, C, and D.
- For fabric placement and attachment follow Diagram 5.

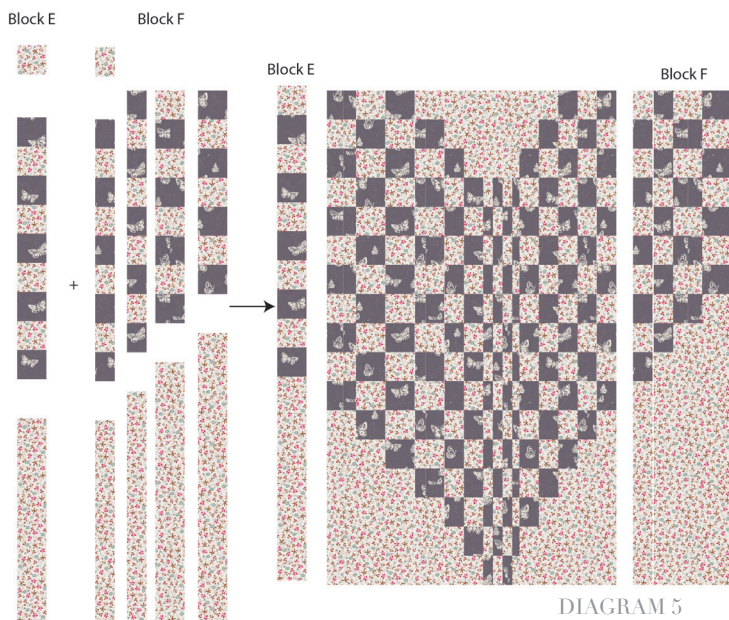


DIAGRAM 5

### Block G

- Take one (1)  $24\frac{1}{2}'' \times 4\frac{1}{2}''$  rectangle from fabric **B**, one (1)  $27\frac{1}{2}'' \times 4\frac{1}{2}''$  rectangle from fabric **B**, and one (1)  $30\frac{1}{2}'' \times 4\frac{1}{2}''$  rectangle from fabric **B**.
- Take three (3)  $4\frac{1}{2}''$  strips from **Strip Set B**.
- For fabric placement and attachment follow Diagram 6.

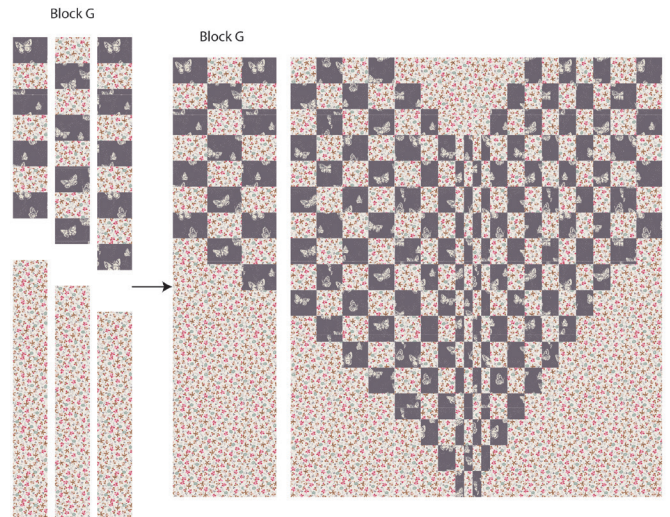


DIAGRAM 6

## QUILT ASSEMBLY

- Cut Backing Fabric into 2 equal rectangles, each  $2\frac{1}{4}$  yd. x WOF. Trim off selvage edges and sew them together along this lengthwise edge, right sides together. Press open the seam.
- Place BACKING FABRIC on a large surface wrong side up. Stretch it with masking tape against that surface.
- Place BATTING on top of backing fabric.
- Place TOP on top of the batting with right side facing up. Smooth away wrinkles using your hands.
- Pin all layers together and baste with basting thread, using long stitches. You can also use safety pins to join the layers.
- Machine or hand quilt starting at the center and working towards the corners. Remember that quilting motifs are a matter of personal preference. Have fun choosing yours!
- After you finished, trim excess of any fabric or batting, squaring the quilt to proceed to bind it.



