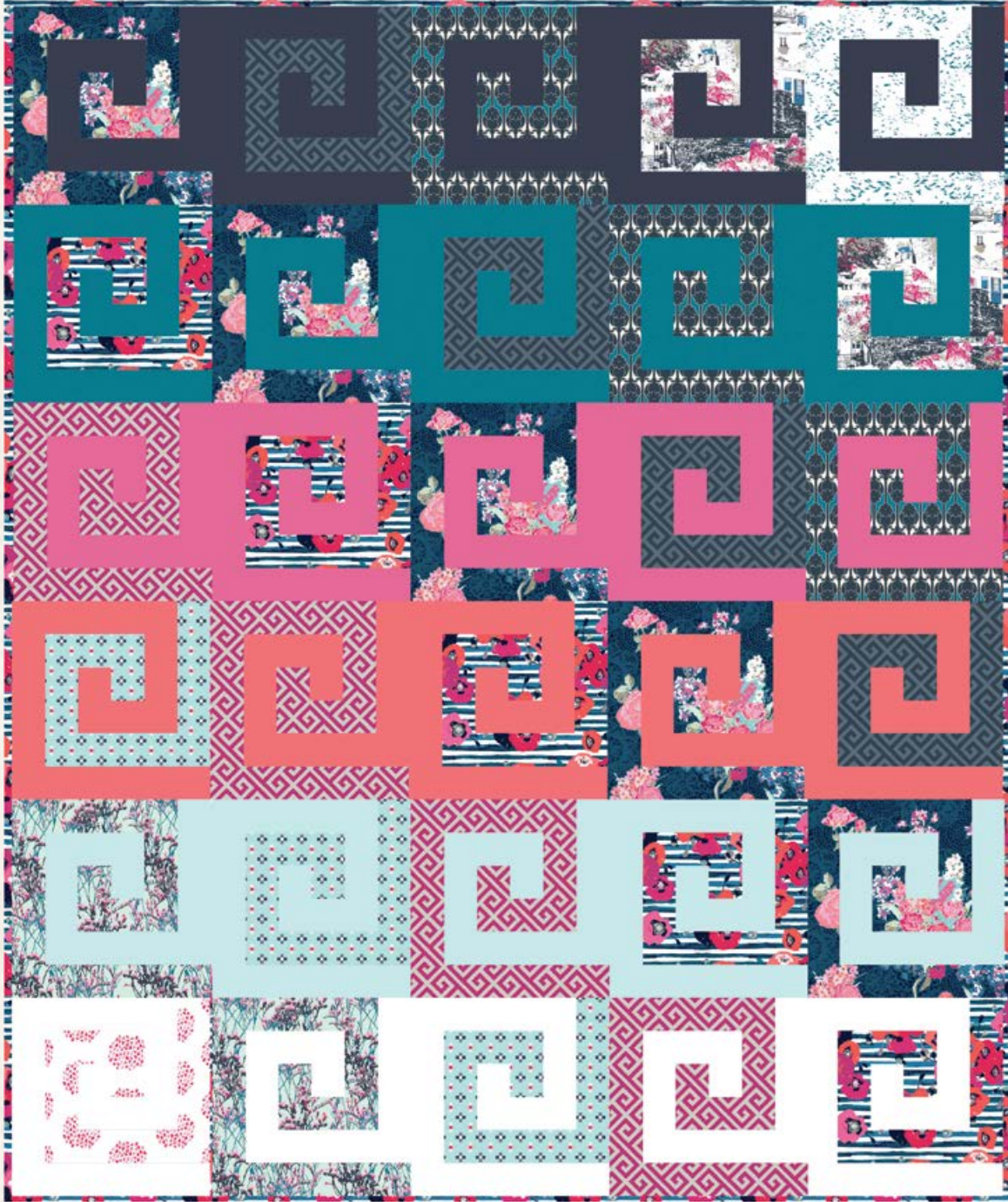


X
X
X
X
X
X
X
X
X
X
X
X
X
X

GREEKAS



GREEKAS

Katarina Roccella

QUILT DESIGNED BY KATARINA ROCCELLA



COLOR OPTION

SKOPELOS

FABRICS DESIGNED BY KATARINA ROCCELLA

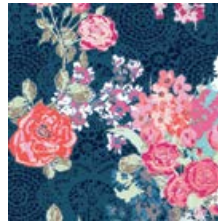
SEA



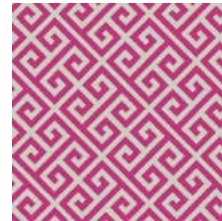
SK-34600
PAPAROUNES CRIMSON



SK-34601
FISH SCHOLEIO INTENSE



SK-34602
NISI FLORA OCEANON



SK-34603
GREEKA FOUXIA



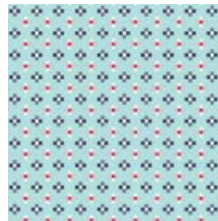
SK-34604
MELOGRANO POMEBERRY



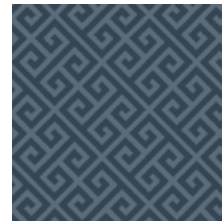
SK-34605
NEO-PODS MEDITERRANEAN



SK-34606
KLADI UNDER SHADOW



SK-34607
CROSSES GALAZIO



SK-34608
GREEKA SKOURO



SK-34609
CHORA SHADES

LAND



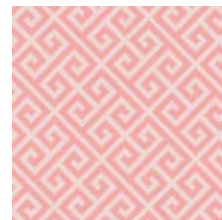
SK-44600
PAPAROUNES PASTEL



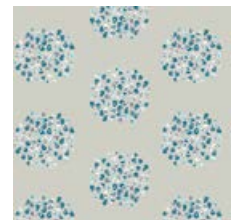
SK-44601
FISH SCHOLEIO CALM



SK-44602
NISI FLORA AERA



SK-44603
GREEKA ROZ



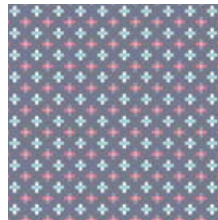
SK-44604
MELOGRANO CLOUDBERRY



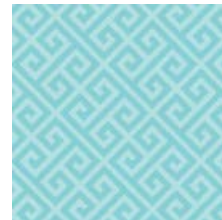
SK-44605
NEO-PODS WATERFALL



SK-44606
KLADI UNDER LIGHT



SK-44607
CROSSES Mouro



SK-44608
GREEKA BLE



SK-44609
CHORA WINDS



GREEKAS

FINISHED SIZE | 60" x 72"



FABRIC REQUIREMENTS

SEA

Fabric A	SK-34601	1/8 yd.
Fabric B	SK-34609	1/4 yd.
Fabric C	SK-34605	3/8 yd.
Fabric D	SK-34608	3/8 yd.
Fabric E	SK-34302	1/2 yd.
Fabric F	SK-34600	1 yd.
Fabric G	SK-34603	3/8 yd.
Fabric H	SK-34607	1/4 yd.
Fabric I	SK-34606	1/4 yd.
Fabric J	SK-34604	1/8 yd.
Fabric K	PE-438	3/8 yd.
Fabric L	PE-418	1/2 yd.
Fabric M	PE-404	3/8 yd.
Fabric N	PE-438	1/2 yd.
Fabric O	PE-451	3/8 yd.
Fabric P	PE-433	1/2 yd.

BACKING FABRIC

Sk-34602 4 yds. *(suggested)*

BINDING FABRIC

SK-34600 (Fabric F) *(included)*

XX



FABRIC REQUIREMENTS

LAND

Fabric A	SK-44606	1/8 yd.
Fabric B	SK-44603	1/4 yd.
Fabric C	SK-44602	3/8 yd.
Fabric D	SK-44600	3/8 yd.
Fabric E	SK-44607	1/2 yd.
Fabric F	SK-44605	1 yd.
Fabric G	SK-44609	3/8 yd.
Fabric H	SK-44604	1/4 yd.
Fabric I	SK-44608	1/4 yd.
Fabric J	SK-44601	1/8 yd.
Fabric K	PE-438	3/8 yd.
Fabric L	PE-450	1/2 yd.
Fabric M	PE-419	3/8 yd.
Fabric N	PE-433	1/2 yd.
Fabric O	PE-451	3/8 yd.
Fabric P	PE-403	1/2 yd.

BACKING FABRIC

Sk-44602 4 yds. *(suggested)*

BINDING FABRIC

SK-44605 (Fabric F) *(included)*

CUTTING DIRECTIONS

¼" seam allowances are included.

Strips:

- Two (2) 2 ½" x WOF strips from Fabric **A**
- Two (2) 2 ½" x WOF strips from Fabric **B**
- Four (4) 2 ½" x WOF strips from Fabric **C**
- Four (4) 2" x WOF strips from Fabric **D**
- Six (6) 2 ½" x WOF strips from Fabric **E**
- Five (5) 2 ½" x WOF strips from Fabric **F**
- Binding: Seven (7) 2 ½" x WOF strips from Fabric **F**
- Five (5) 2 ½" x WOF strips from Fabric **G**
- Three (3) 2 ½" x WOF strips from Fabric **H**
- Three (3) 2 ½" x WOF strips from Fabric **I**
- One (1) 2 ½" x WOF strips from Fabric **J**
- Four (5) 2 ½" x WOF strips from Fabric **K**
- Five (6) 2 ½" x WOF strips from Fabric **L**
- Four (5) 2 ½" x WOF strips from Fabric **M**
- Five (6) 2 ½" x WOF strips from Fabric **N**
- Four (5) 2 ½" x WOF strips from Fabric **O**
- Five (6) 2 ½" x WOF strips from Fabric **P**

Cut the squares and rectangles:

Fabric A:

- One (1) 12 ½" x 2 ½" rectangle
- One (1) 10 ½" x 2 ½" rectangle
- One (1) 6 ½" x 2 ½" rectangle
- Seven (7) 2 ½" x 2 ½" squares

Fabric B:

- Two (2) 10 ½" x 2 ½" rectangles
- Two (2) 6 ½" x 2 ½" rectangles
- Fourteen (14) 2 ½" x 2 ½" squares

Fabric C:

- Three (3) 12 ½" x 2 ½" rectangles
- Three (3) 10 ½" x 2 ½" rectangles
- Three (3) 6 ½" x 2 ½" rectangles
- Twenty One (21) 2 ½" x 2 ½" squares

Fabric D:

- Four (4) 10 ½" x 2 ½" rectangles
- Four (4) 6 ½" x 2 ½" rectangles
- Twenty Eight (28) 2 ½" x 2 ½" squares

Fabric E:

- Five (5) 12 ½" x 2 ½" rectangles
- Five (5) 10 ½" x 2 ½" rectangles
- Five (5) 6 ½" x 2 ½" rectangles
- Thirty five (35) 2 ½" x 2 ½" squares

Fabric F:

- Five (5) 10 ½" x 2 ½" rectangles
- Five (5) 6 ½" x 2 ½" rectangles
- Thirty Five (35) 2 ½" x 2 ½" squares

Fabric G:

- Four (4) 12 ½" x 2 ½" rectangles
- Four (4) 10 ½" x 2 ½" rectangles
- Four (4) 6 ½" x 2 ½" rectangles
- Twenty Eight (28) 2 ½" x 2 ½" squares

Fabric H:

- Three (3) 10 ½" x 2 ½" rectangles
- Three (3) 6 ½" x 2 ½" rectangles
- Twenty One (21) 2 ½" x 2 ½" squares

Fabric I:

- Two (2) 12 ½" x 2 ½" rectangles
- Two (2) 10 ½" x 2 ½" rectangles
- Two (2) 6 ½" x 2 ½" rectangles
- Fourteen (14) 2 ½" x 2 ½" squares

BLOCK CONSTRUCTION

Fabric J:

- One (1) 10 1/2" x 2 1/2" rectangle
- One (1) 6 1/2" x 2 1/2" rectangle
- Seven (7) 2 1/2" x 2 1/2" squares

Fabric K:

- Two (2) 12 1/2" x 2 1/2" rectangles
- Five (5) 10 1/2" x 2 1/2" rectangles
- Five (5) 6 1/2" x 2 1/2" rectangles
- Thirty Five (35) 2 1/2" x 2 1/2" squares

Fabric L:

- Three (3) 12 1/2" x 2 1/2" rectangles
- Five (5) 10 1/2" x 2 1/2" rectangles
- Five (5) 6 1/2" x 2 1/2" rectangles
- Thirty Five (35) 2 1/2" x 2 1/2" squares

Fabric M:

- Two (2) 12 1/2" x 2 1/2" rectangles
- Five (5) 10 1/2" x 2 1/2" rectangles
- Five (5) 6 1/2" x 2 1/2" rectangles
- Thirty Five (35) 2 1/2" x 2 1/2" squares

Fabric N:

- Three (3) 12 1/2" x 2 1/2" rectangles
- Five (5) 10 1/2" x 2 1/2" rectangles
- Five (5) 6 1/2" x 2 1/2" rectangles
- Thirty Five (35) 2 1/2" x 2 1/2" squares

Fabric O:

- Two (2) 12 1/2" x 2 1/2" rectangles
- Five (5) 10 1/2" x 2 1/2" rectangles
- Five (5) 6 1/2" x 2 1/2" rectangles
- Thirty Five (35) 2 1/2" x 2 1/2" squares

Fabric P:

- Three (3) 12 1/2" x 2 1/2" rectangles
- Five (5) 10 1/2" x 2 1/2" rectangles
- Five (5) 6 1/2" x 2 1/2" rectangles
- Thirty Five (35) 2 1/2" x 2 1/2" squares

Sew all rights sides together with 1/4" seam allowance. Press open.

- All sewing is right sides together with 1/4 seam allowance, unless noted otherwise.
- Start by joining the rectangular or square pieces in order to obtain the horizontal rows of the blocks, looking at the diagram. Join the composed horizontal rows vertically, as shown in Diagram 1 - 3 to compose the blocks.
- Press seams either open or to one side, upon your preferences. Pressing the seams open eliminates bulk and makes it easier to match the seams.

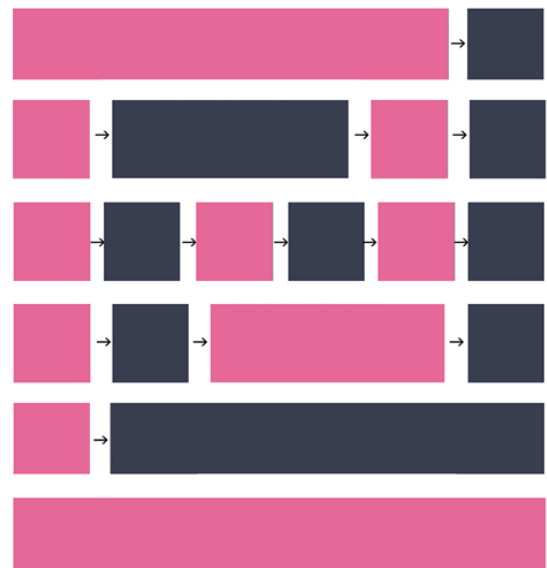


DIAGRAM 1

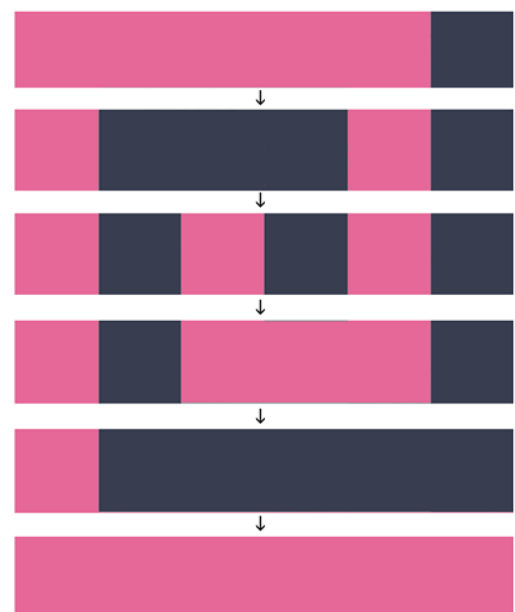


DIAGRAM 2

- 4th row: sew $2\frac{1}{2}''$ x $2\frac{1}{2}''$ square of fabric **I** to $2\frac{1}{2}''$ x $2\frac{1}{2}''$ square of fabric **P** to $6\frac{1}{2}''$ x $2\frac{1}{2}''$ rectangle of fabric **I** to $2\frac{1}{2}''$ x $2\frac{1}{2}''$ square of fabric **P**
- 5th row: sew $2\frac{1}{2}''$ x $2\frac{1}{2}''$ square of fabric **I** to $10\frac{1}{2}''$ x $2\frac{1}{2}''$ rectangle of fabric **P**
- 6th row: $12\frac{1}{2}''$ x $2\frac{1}{2}''$ rectangle of fabric **I**

Block 6C (fabric P + fabric H) – make 1

- 1st row: sew $10\frac{1}{2}''$ x $2\frac{1}{2}''$ rectangle of fabric **P** to $2\frac{1}{2}''$ x $2\frac{1}{2}''$ square of fabric **H**
- 2nd row: sew $2\frac{1}{2}''$ x $2\frac{1}{2}''$ square of fabric **P** to $6\frac{1}{2}''$ x $2\frac{1}{2}''$ rectangle of fabric **H** to $2\frac{1}{2}''$ x $2\frac{1}{2}''$ square of fabric **P** to $2\frac{1}{2}''$ x $2\frac{1}{2}''$ square of fabric **H**
- 3rd row: sew $2\frac{1}{2}''$ x $2\frac{1}{2}''$ square of fabric **P** to $2\frac{1}{2}''$ x $2\frac{1}{2}''$ square of fabric **H** to $2\frac{1}{2}''$ x $2\frac{1}{2}''$ square of fabric **P** to $2\frac{1}{2}''$ x $2\frac{1}{2}''$ square of fabric **H** to $2\frac{1}{2}''$ x $2\frac{1}{2}''$ square of fabric **P** to $2\frac{1}{2}''$ x $2\frac{1}{2}''$ square of fabric **H**
- 4th row: sew $2\frac{1}{2}''$ x $2\frac{1}{2}''$ square of fabric **P** to $2\frac{1}{2}''$ x $2\frac{1}{2}''$ square of fabric **H** to $6\frac{1}{2}''$ x $2\frac{1}{2}''$ rectangle of fabric **P** to $2\frac{1}{2}''$ x $2\frac{1}{2}''$ square of fabric **H**
- 5th row: sew $2\frac{1}{2}''$ x $2\frac{1}{2}''$ square of fabric **P** to $10\frac{1}{2}''$ x $2\frac{1}{2}''$ rectangle of fabric **H**
- 6th row: $12\frac{1}{2}''$ x $2\frac{1}{2}''$ rectangle of fabric **P**

Block 6D (fabric G + fabric P) – make 1

- 1st row: sew $10\frac{1}{2}''$ x $2\frac{1}{2}''$ rectangle of fabric **G** to $2\frac{1}{2}''$ x $2\frac{1}{2}''$ square of fabric **P**
- 2nd row: sew $2\frac{1}{2}''$ x $2\frac{1}{2}''$ square of fabric **G** to $6\frac{1}{2}''$ x $2\frac{1}{2}''$ rectangle of fabric **P** to $2\frac{1}{2}''$ x $2\frac{1}{2}''$ square of fabric **G** to $2\frac{1}{2}''$ x $2\frac{1}{2}''$ square of fabric **P**
- 3rd row: sew $2\frac{1}{2}''$ x $2\frac{1}{2}''$ square of fabric **G** to $2\frac{1}{2}''$ x $2\frac{1}{2}''$ square of fabric **P** to $2\frac{1}{2}''$ x $2\frac{1}{2}''$ square of fabric **G** to $2\frac{1}{2}''$ x $2\frac{1}{2}''$ square of fabric **P** to $2\frac{1}{2}''$ x $2\frac{1}{2}''$ square of fabric **G** to $2\frac{1}{2}''$ x $2\frac{1}{2}''$ square of fabric **P**
- 4th row: sew $2\frac{1}{2}''$ x $2\frac{1}{2}''$ square of fabric **G** to $2\frac{1}{2}''$ x $2\frac{1}{2}''$ square of fabric **P** to $6\frac{1}{2}''$ x $2\frac{1}{2}''$ rectangle of fabric **G** to $2\frac{1}{2}''$ x $2\frac{1}{2}''$ square of fabric **P**
- 5th row: sew $2\frac{1}{2}''$ x $2\frac{1}{2}''$ square of fabric **G** to $10\frac{1}{2}''$ x $2\frac{1}{2}''$ rectangle of fabric **P**
- 6th row: $12\frac{1}{2}''$ x $2\frac{1}{2}''$ rectangle of fabric **G**

Block 6E (fabric P + fabric F) – make 1

- 1st row: sew $10\frac{1}{2}''$ x $2\frac{1}{2}''$ rectangle of fabric **P** to $2\frac{1}{2}''$ x $2\frac{1}{2}''$ square of fabric **F**
- 2nd row: sew $2\frac{1}{2}''$ x $2\frac{1}{2}''$ square of fabric **P** to $6\frac{1}{2}''$ x $2\frac{1}{2}''$ rectangle of fabric **F** to $2\frac{1}{2}''$ x $2\frac{1}{2}''$ square of fabric **P** to $2\frac{1}{2}''$ x $2\frac{1}{2}''$ square of fabric **F**

- 3rd row: sew $2\frac{1}{2}''$ x $2\frac{1}{2}''$ square of fabric **P** to $2\frac{1}{2}''$ x $2\frac{1}{2}''$ square of fabric **F** to $2\frac{1}{2}''$ x $2\frac{1}{2}''$ square of fabric **P** to $2\frac{1}{2}''$ x $2\frac{1}{2}''$ square of fabric **F** to $2\frac{1}{2}''$ x $2\frac{1}{2}''$ square of fabric **P** to $2\frac{1}{2}''$ x $2\frac{1}{2}''$ square of fabric **F**
- 4th row: sew $2\frac{1}{2}''$ x $2\frac{1}{2}''$ square of fabric **P** to $2\frac{1}{2}''$ x $2\frac{1}{2}''$ square of fabric **F** to $6\frac{1}{2}''$ x $2\frac{1}{2}''$ rectangle of fabric **P** to $2\frac{1}{2}''$ x $2\frac{1}{2}''$ square of fabric **F**
- 5th row: sew $2\frac{1}{2}''$ x $2\frac{1}{2}''$ square of fabric **P** to $10\frac{1}{2}''$ x $2\frac{1}{2}''$ rectangle of fabric **F**
- 6th row: $12\frac{1}{2}''$ x $2\frac{1}{2}''$ rectangle of fabric **P**

ASSEMBLING THE TOP

Sew all right sides together with $\frac{1}{4}''$ seam allowance. Press open.

- Sew all right sides together with $\frac{1}{4}''$ seam allowance. Press seams.
- Join the blocks (as shown in diagram) in order to obtain the horizontal rows.
- Join the composed horizontal rows vertically, as shown in the diagram to compose the quilt. Press seams.
- 1st row: BLOCK#1A + BLOCK #1B + BLOCK #1C + BLOCK #1D + BLOCK #1E
- 2nd row: BLOCK#2A + BLOCK #2B + BLOCK #2C + BLOCK #2D + BLOCK #2E
- 3rd row: BLOCK#3A + BLOCK #3B + BLOCK #3C + BLOCK #3D + BLOCK #3E
- 4th row: BLOCK#4A + BLOCK #4B + BLOCK #4C + BLOCK #4D + BLOCK #4E
- 5th row: BLOCK#5A + BLOCK #5B + BLOCK #5C + BLOCK #5D + BLOCK #5E
- 6th row: BLOCK#6A + BLOCK #6B + BLOCK #6C + BLOCK #6D + BLOCK #6E

1A	1B	1C	1D	1E
2A	2B	2C	2D	2E
3A	3B	3C	3D	3E
4A	4B	4C	4D	4E
5A	5B	5C	5D	5E
6A	6B	6C	6D	6E

QUILT ASSEMBLY

Sew rights sides together.

- Place BACKING FABRIC on a large surface wrong side up. Stretch it with masking tape against that surface.
- Place BATTING on top of backing fabric.
- Place TOP on top of the batting with right side facing up. Smooth away wrinkles using your hands.
- Pin all layers together and baste with basting thread, using long stitches. You can also use safety pins to join the layers.
- Machine or hand quilt starting at the center and working towards the corners. Remember that quilting motives are a matter of personal preference. Have fun choosing yours!
- After you finished, trim excess of any fabric or batting, squaring the quilt to proceed to bind it.

BINDING

Sew rights sides together.

- I suggest doing the Double Fold Binding, which has double thickness.
- Cut enough (7) strips $2\frac{1}{2}$ " wide by the width of the fabric **F** to make a final strip 276" long. Fold and press the long binding strip in half widthwise (on the shorter side), wrong sides together.
- Cut the beginning of the binding strip at a 45 degree angle. Start sewing the binding strip in the middle of one of the sides of the quilt, leaving an approximated 5" tail loose. Sew with $\frac{1}{4}$ " seam allowance (using straight stitch), aligning the strip's raw edge with the quilt top's raw edge. Pin in place if needed. When your needle is $\frac{1}{4}$ " from the corner, Turn the quilt and stitch off at a 45 degree angle and stitch reaching the end of that corner (diagram 1).

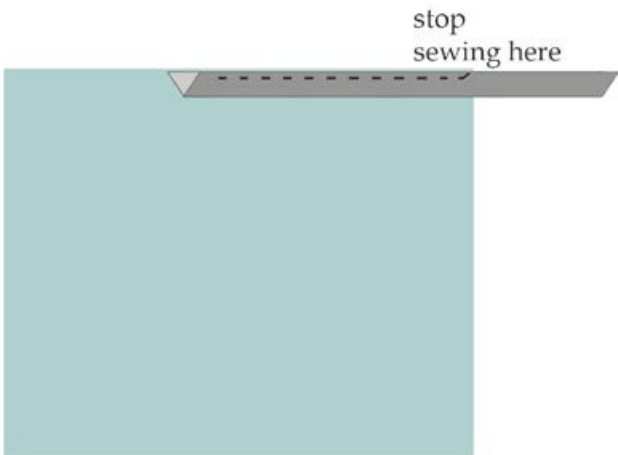


diagram 1

- Turn the quilt and fold the strip in a motion of 45° and upward, pressing with your fingers, using the angled stitch as your guide (diagram 2). Hold this fold with your finger, bring the strip down in line with the next edge, making a horizontal fold that aligns with the top edge of the quilt (diagram 3). Start sewing at $\frac{1}{4}$ " of the border, stitching all the layers. Do the same in the four corners of the quilt.

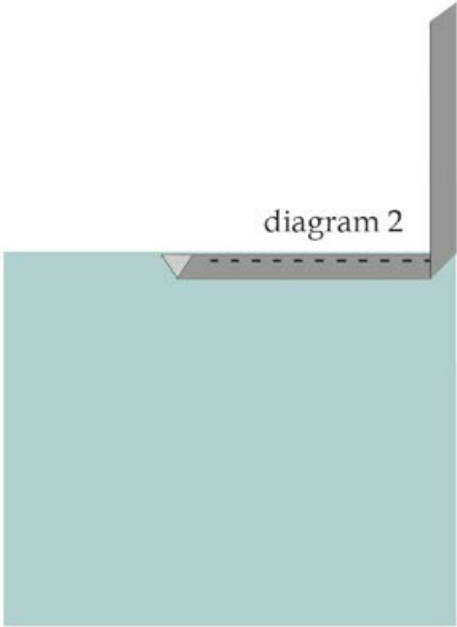


diagram 2

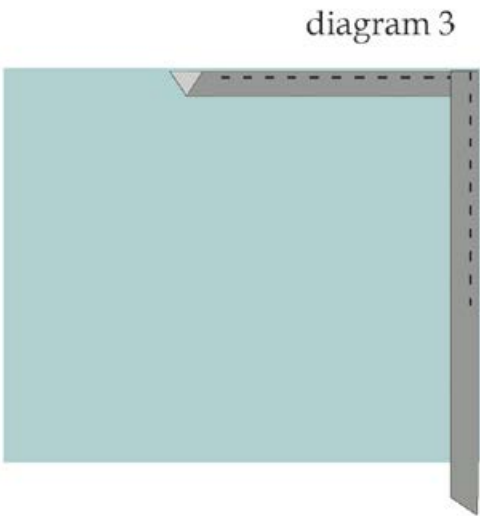


diagram 3

- When approaching the starting point, stop stitching at least 10" from where you started, leaving another tail, at least 6" long. There will be a gap between the stitched bindings. Unfold the ending binding and align it nicely with the quilting edge. Open the ending strip toward the quilt, right sides together and place the beginning of the binding strip that is cut at 45 degrees inside the open part of the ending binding strip. Using a pencil or a pin, mark the line on the ending binding strip where the beginning piece lays (diagram 4). Mark another parallel line to the first one, precisely 1/2" distant, so that it can be lined and sewn perfectly with the other end, using 1/4 seam allowance. Pin and sew the ends, right sides together (diagram 5). Press the seam open and finish sewing that remaining binding piece onto the quilt edge.
- Turn binding to the back of the quilt, far enough to cover the trimmed edges and stitch by hand using blind stitch.

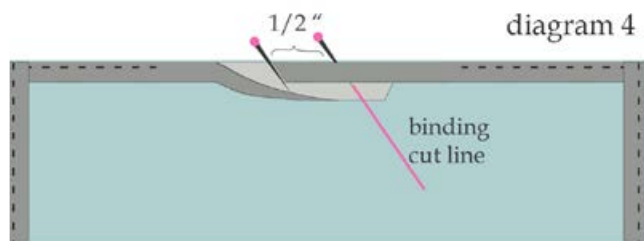
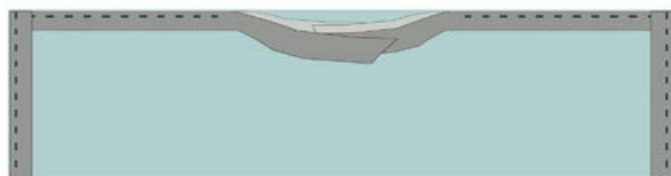
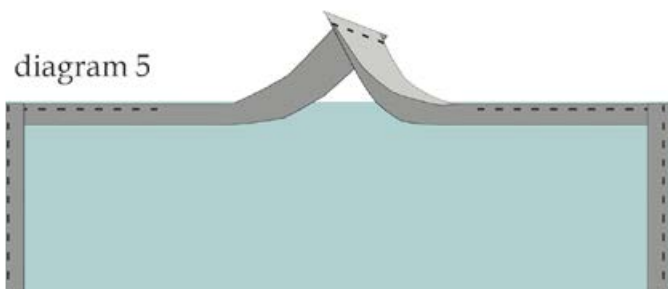


diagram 5



XX

Congratulations & enjoy

XX



artgalleryfabrics.com

NOTE: While all possible care has been taken to ensure the accuracy of this pattern, We are not responsible for printing errors or the way in which individual work varies. Please read instructions carefully before starting the construction of this quilt. If desired, wash and iron your fabrics before starting to cut.