

LEGACY STOVES™

Advanced Design
Old Fashioned Value



Legacy Stoves
COAL LINES



MAGNAFIRE SERIES

Easy maintenance, clean-burning performance and consistent heat output make the Harman MagnaFire Series of coal stoves and inserts practical heating solutions for any home.

Experience a series of coal stoves with "Advanced Design - Old Fashioned Value"

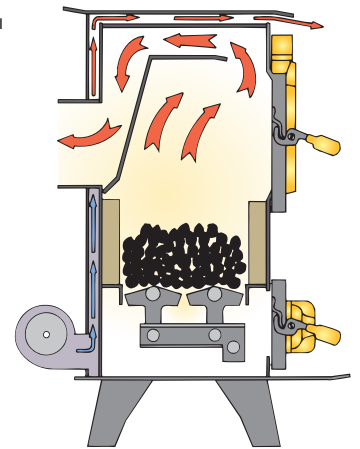


Mark I STOVE

The Mark I Coal Stove is a compact blend of function and technology—and easily burns any grade of coal. Heat is extracted by an advanced heat exchanger system and circulated throughout the home with a powerful blower.

Features

- Up to 48,000 BTUs—heats 900 to 2,600 sq. ft.¹
- Up to 24 hour burn times
- Standard blower
- Spiral chamber
- Legacy grate system



Mark II & Mark III STOVE

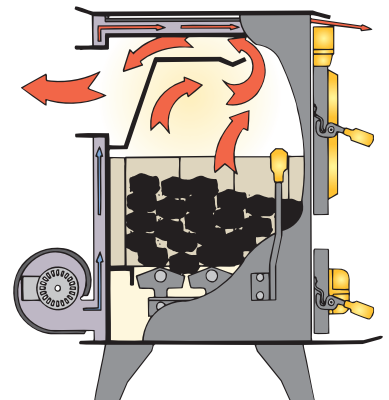
The Mark II and Mark III are two powerful, easy-to-operate coal stoves. An uncompromising commitment to quality is evident with solid, precision-welded 1/4-inch steel. A blower system and specially designed baffle circulate heat throughout your home, not up the chimney.

Features

- Mark II: Up to 72,000 BTUs—heats 1,500 to 3,800 sq. ft.¹
- Mark III: Up to 92,000 BTUs—heats 1,900 to 4,900 sq. ft.¹
- Up to 24 hour burn times
- Standard blower
- Spiral chamber
- Legacy grate system

Options

- Domestic hot water coil





Function and Utility

The TLC 2000 is a heating powerhouse. It has unmatched utility, and can be converted from a Top Loading Coal (TLC) stove to a wood-burning stove.

Engineered excellence makes the TLC 2000 achieve reduced emissions and up to 48 hours of uninterrupted burn time. A large ash pan and clean-burning performance offer easy maintenance. The TLC doesn't require electricity, ensuring smooth operation—even during power outages.

Heat your home, enjoy a traditional fire and create a delicious char-grilled meal with the optional cooking grill. The TLC delivers.

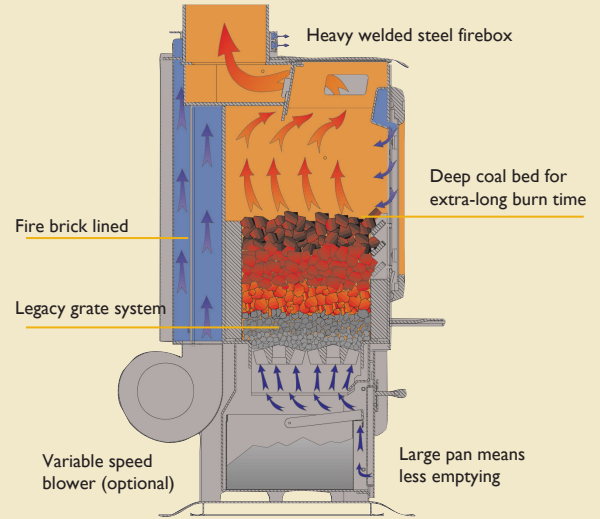


Features

- 72,000 BTUs — heats 1,200 to 3,000 square feet!
- Up to 48 hours of burn time from each load of coal
- Top and front-load doors
- Air adjuster to alter fire size
- Convenient, large ash pan
- Large glass size for fire-viewing

Options

- Variable speed blower
- Fireplace screen
- Cooking grill
- Modern brushed stainless trim
- Top air grille with brushed stainless trim



Cover Photo: TLC 2000 shown with modern brushed stainless trim and top air grille with brushed stainless trim



Top Loading



Large Ash Pan



Shaker Handle



Optional Cooking Grill

SUPER MAGNUM STOKER

FEATURES & OPTIONS

Distinctive features offer convenience, safety and style.

Features

- 105,000 BTU/Hour Input—heats 2,000 to 5,300 square feet!
- 110lb. hopper capacity
- More than 100 hours of burn time from each load of coal
- Exhaust sensing technology constantly monitors and adjusts heat levels
- Air filter ensures optimal air quality

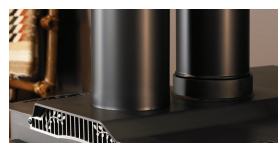
Options

- Brushed stainless steel door trim
- Decorative slate tile accent
- Heat transfer kit
- Battery backup

Slate Tile Accents



Heat Transfer Kit



SPECIFICATIONS

Model	Mark I	Mark II	Mark III	TLC 2000	Supermag
BTU/hr Input	48,000	72,000	92,000	72,000	5,000-105,000
Heating Capacity ¹	900 - 2,600 sq. ft.	1,500 - 3,800 sq. ft.	1,900 - 4,900 sq. ft.	1,200 - 3,000 sq. ft.	up to 5,300 sq. ft.
Fuel	Pea, nut, or stove coal	Pea, nut, or stove coal	Pea, nut, or stove coal	Pea, nut, or stove coal wood	Rice coal
Flue Size (inches)	6	6	6	6	6
Blower Size (cfm)	76	76	135	135	135
Weight (lbs.)	339	449	530	425	543
Domestic Hot Water Coil	N/A	Optional	Optional	N/A	N/A
Number of Grates	2	2	3	3	N/A
Ash Pan	Standard	Standard	Standard	Standard	Standard
Glass Door	Standard	Standard	Standard	Standard	Standard
Adjustable Feet	N/A	N/A	N/A	N/A	Standard
Heat Collector	N/A	N/A	N/A	N/A	Optional
Firebox Reducer	N/A	N/A	N/A	N/A	N/A
Height (nches)	32	32-1/2	32-1/2	37-3/4	42
Width (inches)	20	25	25	25-7/8	26.7
Depth (inches)	19	19-1/2	24	19-1/8	35-1/2
Height Top of Flue (inches)	25-1/2	28-1/2	28-1/2	37-3/4	40
Clearance to Combustibles—Rear (inches)	24	24	24	N/A	2 (Hopper)
Clearance to Combustibles—Side (inches)	33	33	33	18	24
Clearance to Combustibles—Front (inches)	16	16	16	16	24
Approved Testing	ULC S627	ULC S627	ULC S627	UL737	UL 1482

YOUR LEGACY STOVES DEALER IS:

LEGACY STOVESTM

Advanced Design
Old Fashioned Value

A brand of Alternate Heating Systems
2393 LITTLE EGYPT RD
HARRISONVILLE PA 17228



facebook.com/altheatsys

www.legacystoves.com

www.alternateheatingsystems.com

LIMITED LIFETIME WARRANTY²

One of the best in the industry, AHS provides a limited lifetime warranty on most important aspects: firebox and heat exchanger.

¹See your local authorized Legacy Stoves dealer for help in determining the product that best suits your heating needs based on climate and home efficiency.

²For full warranty details, visit www.legacystoves.com

Actual product appearance, including flame, may differ from image. Product specifications and pricing subject to change without notice. The images and descriptions in this brochure are provided to assist you in product selection only. Refer to installation manual for complete clearance requirements and specifications.

Stove surfaces get extremely HOT and can cause severe burns if touched. Keep a safe distance away.