

Beautiful KITCHENS & Baths

Why Details Matter

How to Pull a
Look Together

Worth the Splurge:

- * Showstopping Islands
- * Indulgent Tubs
- * Windows That Wow

Keys to Country French Style p. 49

Spring 2013
Display until April 23

\$7.99 U.S.



BHG.com/KitchenBath

True Blue

Use a little or a lot—we'll show you how to pull together a stylish kitchen or bath using blue finishes.

IF BLUE IS YOUR HUE then you might be dreaming of a home with deep navy, celestial shades, or robin's-egg blue. Figuring out what to pair with your favorite tone can be a challenge. Here we've dissected two kitchen color schemes—and added a few bonus idea starters—so you can see what other colors are needed to balance the bold or subtle palette you crave.

FABRIC—Scalamandre, scalamandre.com.
TILE—Ann Sacks, annsacks.com.
WALLPAPER—Thibaut, thibautdesign.com.
BAKEWARE—Le Creuset, available at Williams-Sonoma, williams-sonoma.com.
DINNERWARE—Wedgwood, available at Macy's, macys.com.

PHOTOGRAPHER: JAY WILDE



Playful blue TILE ENERGIZES CREAMY CABINETS. **A vintage blue** RANGE MIXES WELL WITH ANTIQUES. **Robin's-egg blue** ON THE ISLAND SWEETENS A WHITE KITCHEN. **Celestial blue** WALLS AND MARBLE FLOORS ARE DREAMY.



Beveled mirrors and paneled walls add elegance and depth to the bathroom's neutral palette. Glass accents, creamy surfaces, and sweeping curves are appropriate design choices for a tranquil high-rise space.





Up, Up, and Away

A picturesque cityscape inspired the serene style of this luxurious high-rise master bathroom.

BY EMILY ANDERSON | PHOTOS RICHARD LEO JOHNSON
FIELD EDITOR SANDRA L. MOHLMANN

A bathroom is a home's most private room. But when Terri Henning began creating the master bathroom in her penthouse apartment, she gave one key parameter to interior designer Monique Gibson and builder James Meadors: Keep the room's 12 windows intact.

"What you see out of the windows are the colors of Charleston, South Carolina," Gibson says. "Everything was designed to reflect the views."

The entire space evokes an airy emotion, starting with the floor plan. Major fixtures are positioned in the center of the space so as not to block the bathroom's two walls of windows. Terri can also keep an eye on Charleston when her back is turned, courtesy of impressive mirrors above the custom vanity and built-in bathtub.

Another awe-inspiring glass accent is the antique French chandelier. The tiered glass beads add both glamour and playfulness to the space. "When Monique and I looked at it, we thought it looked like a bathtub with bubbles spilling out," Terri says.

Echoing the style of the 1930s light fixture are two custom pieces built by craftsmen Swanson Hood and Robert Hines. Hood hand-carved the double vanity to bring its graceful curves to life. Hines designed and crafted the delicate dressing table. The mirrored table is one of Terri's favorite elements. "It's like a little piece of jewelry in the bath," she says.

The flooring also follows a gemlike design. The team created a quiet pattern underfoot with an innovative approach to limestone tile. They scored and stained a large tile to make it look like several pieces set together. Each eye-catching design radiates from a dark square marble tile.

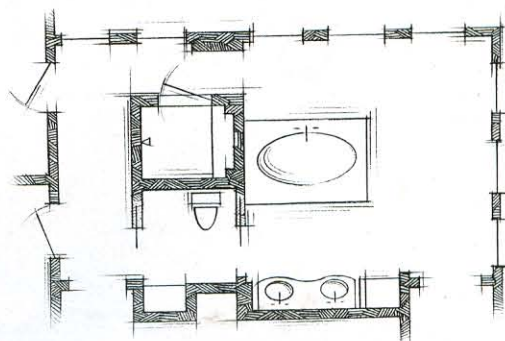
The soft color scheme repeats throughout the room. "The palette was intended to be a backdrop to the city," Gibson says. The neutral scheme complements, rather than competes with, the waterfront and steeply-lined views. Various



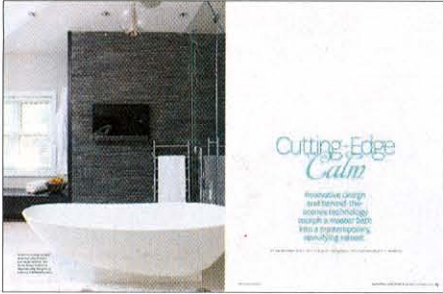
surfaces, such as the paneled walls, tile floors, and marble countertop and bathtub surround, introduce different tones and patterns for visual interest.

The ethereal quality of Terri's master bathroom—from its reflective details to its airy palette—creates a feeling of calm. "It's one of my favorite rooms, because at the end of the day, I can watch the sun set over what I think is the most beautiful city in America and relax," Terri says.

RESOURCES BEGIN ON PAGE 122.



Opposite: The custom vanity becomes a dramatic showpiece when recessed under a graceful arched ceiling. Art Deco-inspired sconces mimic the silhouette of the vanity legs. **Above:** Floor-to-ceiling sheer drapes create soft texture and privacy without hindering the view or blocking sunlight from streaming in through the arched windows.



CUTTING-EDGE CALM PAGES 92-99

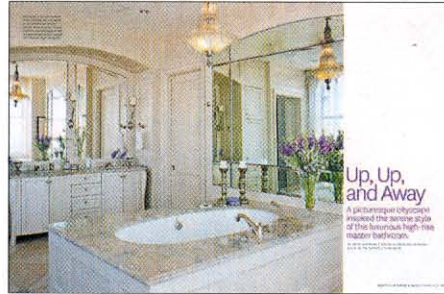
Interior designer: Nathalie Tremblay, Atelier Cachet, 45 Avocet Dr., Vaughan, ON L4H 2H3; 416/805-1573; ateliercachet.com.

Builder: Dave Nicholas, Atelier Cachet, 45 Avocet Dr., Vaughan, ON L4H 2H3; 416/805-1573; ateliercachet.com.

Vanity and window seat custom—Atelier Cachet, Vaughan, Ontario; 416/805-1573; ateliercachet.com. **Cabinetry** custom—

Manorwood Fine Cabinetry, Concord, Ontario; 905/760-2339. **Countertop** Organic White—CaesarStone US; 818/779-0999; caesarstoneus.com. **Fabrication of countertop**—Royal Designer Tops, Inc., North York, Ontario; 416/749-7100.

Hardware for vanity and window seat, tub—Ginger's, Toronto, Ontario; 416/787-1787; gingers.com. **Mirror**—West Elm; 866/428-6468; westelm.com (product line varies). **Lights flanking mirror** Chandelier—Restoration Hardware; 800/910-9836; restorationhardware.com. **Sink** from the Cube collection #VC48—Wetstyle, Inc.; 888/536-9001; wetstyle.ca. **Faucet, rain showerhead, body jets, hand wand**—Vola; vola.com. **Shower hardware** frameless shower enclosure with moveable transoms—Adanac Glass, Ltd.; adanacglass.com. **Backsplash tile** Mudmosaic Runway Salt Mix, **dark wall at tub** Cerro Slate, **shower tile** Vision Ghiacco, **flooring** Astra—Ciot, Toronto; 416/785-8080; ciot.com. **Lighting at tub** Caviar pendant—Elte; 888/276-3583; elte.com. **Floor lights at tub** Swarovski Crystal Rhythm—Union Lighting; unionlighting.com. **Heated towel bar**—Home Outfitters; homeoutfitters.com. **Wall paint** Stonington Gray—Benjamin Moore; 888/236-6667; benjaminmoore.com [P]. **Pocket door**—Home Depot USA, Inc.; homedepot.com (product line varies).



UP, UP, AND AWAY PAGES 100-105

Designer-builder: James Meadors, Meadors Construction Corp., P.O. Box 21758, Charleston, SC 29413; 843/723-8585; meadorsinc.com.

Interior designer: Monique Gibson, Monique Gibson Interior Design, 240 Centre St., #3A, New York, NY 10013; 212/966-9636; moniquegibson.com.

Cabinetry—Swanson Hood, Meadors Construction Corp., Charleston, South Carolina; 843/723-8585; meadorsinc.com.

Cabinet hardware—E.R. Butler & Co.; New York City; 212/925-3565; erbutler.com.

Dressing table, mirrors over vanity and tub—Robert Hines, Hines Studios, Charleston, South Carolina; 843/722-1593.

Sink Savoy, sink and tub faucets Opus Egg crystal handles, **towel rings and shower fixtures** Opus—Waterworks; 800/998-2284; waterworks.com. **Cabinet color** White Sand—Benjamin Moore; 888/236-6667; benjaminmoore.com [P].

Tub—BainUltra; 800/463-2187; bainultra.com. **Sconces flanking vanity**—Urban Archaeology; 312/431-4646; urbanarchaeology.com. **Fabric for drapery, fabric for boudoir chair**—

Bergamo Fabrics, Inc., Mount Vernon, New York; 914/665-0800; bergamofabrics.com [T]. **Lamps on dressing table, boudoir chair**—custom design by Monique Gibson, Monique Gibson Interior Design, New York City; 212/966-9636; moniquegibson.com.

Flooring scored limestone, **countertops, tub surround and shower tile** Winter Cloud marble—contact local cut-stone retailers. **Chandelier, all other accessories**—homeowners' collection.



STYLE SQUARED PAGES 106-111

Interior designer: Tereza Bajan, Bajan Design Group, New Westminster, British Columbia; 604/616-2648; e-mail: terezabajan@gmail.com.

Builder: Troy Van Vliet, Tavan Developments, Ltd., 150-628 Kent Ave., Vancouver, South E, Vancouver, BC V5X 0A8; 604/263-3026; tavandevelopments.com.

Countertop—CaesarStone US; 818/779-0999; caesarstoneus.com. **Tub** from the Ove collection—Wetstyle, Inc.; 888/536-9001; wetstyle.ca. **Shower faucets**—

Aquabress; aquabress.com. **Sink and tub faucets**—THG Paris; 954/425-8225; thgstyle.com for a dealer near you. **Shower tile**—Sicis; sicis.com. **Cabinet hardware**—Richelieu; in the United States; 800/619-5446; in Canada; 800/361-6000; richelieu.com. **Sconces flanking sink**—

Hudson Valley Lighting, Inc.; 800/814-3993; hudsonvalleylighting.com. **Chandelier**—Schonbek Worldwide Lighting, Inc.; 800/836-1892; schonbek.com. **Flooring** Volakas marble—contact local cut-stone retailers.

Jars on countertops—Anthropologie; 800/309-2500; anthropologie.com.

Drapery custom gray satin—homeowners' collection.