

FRONT: Legs: Starting at lower edge with color A, cast on 5 sts. Attach B. **1st row:** (K 1 A, k 1 B) twice; k 1 A. **2nd row:** (P 1 A, p 1 B) twice; p 1 A. Repeat last 2 rows until leg measures 4½", ending with a p row. Place sts on a st holder. Make 3 more legs in same manner, but do not put sts of last leg on holder.

Body: 1st row: Across leg sts k 3 B, k 2 A; cast on 1 A st, then 2 B sts; place sts of 3 legs from holders onto left-hand needle; across next leg k 1 B, k 3 A, k 1 B; cast on 2 B sts, then 3 A sts, 3 B sts and 2 A sts; across next leg k 1 A, k 3 B, k 1 A; cast on 2 A sts, then 1 B st; across last leg k 2 B, k 3 A (36 sts). **2nd row:** (P 3 A, p 3 B) 6 times. **3rd row:** (K 3 B, k 3 A) 6 times. **4th row:** (P 3 B, p 3 A) 6 times. **5th row:** (K 3 A, k 3 B) 6 times. **6th row:** Repeat 4th row. Continue in checkerboard pattern, decreasing 1 st at end of every k row (tail end of cat) 3 times, ending with a p row (4 bands of checkerboard squares completed). **Next row:** K 15 B, complete row in checkerboard pattern, decreasing 1 st at end of row. **Following row:** P to last 15 sts in pattern, p 15 B. Continuing in pattern as established, work 3 more rows, decreasing 1 st at end of each k row. End with a k row. **Next row:** Bind off 15 sts for back in pattern, break off A; with B p remaining sts for head.

Head: Work even in stockinette st on 15 sts for 2". Dec 1 st at beg and end of every row 4 times. Bind off remaining 7 sts.

BACK: Work as for front until 6 rows of body have been completed (2 bands of squares). Continue in checkerboard pattern, decreasing 1 st at beg of every k row 6 times, ending with a p row. **Next row:** Bind off 15 sts for back, k across remaining 15 sts in checkerboard pattern for head. Continuing in checkerboard pattern work back of head in same manner as front of head.

TAIL: With A, cast on 6 sts. Working in stockinette st, work (4 rows A, 2 rows B) 6 times; 4 rows A. Bind off. Sew long edges together, drawing up sts slightly so that tail curls. Wrap B 5 times around index and middle fingers. Slip loops off fingers and using pink yarn, bind tightly around center. Sew to end of tail.

FINISHING: Sew front and back together leaving opening for stuffing; stuff. Sew opening closed. Sew tail in place. **Features:** Follow photograph and stitch diagrams. Embroider all features except cheeks in chain stitch with black yarn. Work a straight stitch with yellow for each eye, and work cheeks in satin stitch with pink.

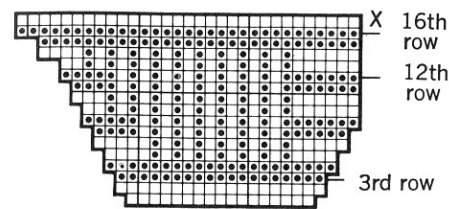
Right Ear: Starting at base of ear with A, cast on 6 sts. **1st row:** K 4, k 2 tog. **2nd row:** P 2 tog, p 3. **3rd row:** K 2, k 2 tog. **4th row:** P 2 tog, p 1. **5th row:** K 2 tog. Break off. **Left Ear:** Cast on as for right ear. **1st row:** K 2 tog, k 4. **2nd row:** P 3, p 2 tog. **3rd row:** K 2 tog, k 2. **4th row:** P 1, p 2 tog. **5th row:** K 2 tog. Break off. Sew ears in place. **Ruffle:** With crochet hook and purple yarn crochet a chain with an uneven number of sts long enough to go around cat's neck. **1st row:** H dc in 3rd ch from hook and in each ch across; ch 3, turn. **2nd row:** Sk first h dc, * in next h dc work dc, ch 1 and dc; ch 1, dc in next h dc, ch 1. Repeat from * across, ending ch 5; turn. **3rd row:** Sc in next ch-1 sp, * ch 5, sc in next ch-1 sp. Repeat from * across, ending with ch 5, sc in last loop. Break off. Sew ruffle around neck.

Wiggly Bird

SIZE: 14½" from tip of beak to tail.

MATERIALS: Rug yarn, 4 ounces each gold (color A) and magenta (B); small amount orange knitting worsted; scraps blue, aqua, purple and green lightweight yarns.

BODY: Starting at lower edge with A, cast on 17 sts. **1st row:** K across. **2nd row:** P across, increasing 1 st at beg and end of row. Attach B. Continue in stockinette st, and starting with 3rd row of chart, follow chart from right to left on k rows and from left to right on p rows. Inc 1 st at edges as indicated on chart and cast on 2 sts at end of 13th and 15th rows. Work through 16th row (31 sts). **17th row:** With A, k 11 and place these sts on a st holder for head; k across remaining 20 sts for back. Work other side of bird by reading chart from top to bottom as follows: **Next row:** With A, p 20, cast on 11 sts (31 sts). **Following row:** With B, k across. **Next row:** With B, bind off 2 sts, p across remaining sts. **Following row:**



COLOR KEY

□ gold ■ magenta

Follow chart across. **Next row:** With A bind off 2 sts, p across remaining sts, following chart. Continue by reading chart from top to bottom, starting with 12th row, and decreasing at edges as indicated on chart. Bind off remaining 17 sts.

HEAD: 1st row: Place sts from holder onto needle and attach A. Work in stockinette st for 1½". Place marker at front edge of head to indicate top of beak. Dec 1 st at beg and end of every other row twice. Bind off remaining 7 sts. Pick up 11 sts along cast-on edge for other side of head. Work to correspond to first side. Sew halves of head together from markers to back.

Beak: With bird facing to right, attach B at point X on chart. Pick up and k 5 sts from X to marker, 1 st in seam and 5 sts from marker on other side of head to X. Continue in stockinette st on 11 sts for 3 rows more. **5th row:** K 3, k 2 tog, k 1, k 2 tog, k 3. Work even for 3 rows. **9th row:** K 2, k 2 tog, k 1, k 2 tog, k 2. Work even for 3 rows. **13th row:** (K 1, k 2 tog) twice; k 1. Work even for 3 rows. **17th row:** K 2 tog, k 1, k 2 tog. **18th row:** P 3 tog. Break off.

FINISHING: Sew rest of bird together, leaving opening for stuffing; stuff. Sew opening closed. **Crest:** With A and crochet hook, ch 14. Join with sl st to form ring. **1st rnd:** Work loop st (see General Directions) in each ch around, drawing up 3½" loops on index finger. Do not join at end of rnd. **2nd rnd:** Work loop st the same size as before in each st (not into loop) around, sl st in next st. Break off. Fold chain-stitch edge of crest together and sew edge of last rnd to top of head. **Note:** Follow photograph and stitch diagrams for embroidery as follows: **Eyes:** With green, embroider circle 1¼" in diameter in satin stitch on each side of head. With blue work chain stitch around edge of circle. Work eyelashes in aqua French knots, pupils in purple satin stitch circled by aqua chain stitch and "spokes" in purple straight stitches. **Wings:** Working in chain stitch, outline wing area on each side of body with aqua and work grid

design with blue. With orange work French knot in center of each square of grid. **Nostrils:** With B in tapestry needle, take a stitch over top of beak about 1" from tip.

Flower-Bearing Bruin



SIZE: 15½" tall.

MATERIALS: Rug yarn, 6 ounces golden brown (color A), 2 ounces olive (B); small amount black knitting worsted for features; scraps of bright colored yarns in various weights for necklace.

FRONT: Legs: Starting at foot with A, cast on 9 sts. **1st row (wrong side):** (P 1, work popcorn—see General Directions) 4 times; p 1. Work in stockinette st until leg measures 4½", ending with a p row. Place sts on a st holder. Make 2nd leg in same manner but do not put sts on holder.

Body: 1st row: K across leg, cast on 1 st, slip sts from holder onto left-hand needle and k across. Continue in stockinette st on 19 sts until body measures 3" from top of legs. Place markers at beg and end of last row to indicate underarms. Work even until piece measures 10½" from toes. **To Shape Shoulders:** Bind off 5 sts at beg of next 2 rows (9 sts left for neck).

Head: Inc 1 st at beg and end of every other row 4 times. Work 4 rows even on 17 sts. Dec 1 st at beg and end of every other row 4 times. Bind off remaining 9 sts.

BACK: Legs: Starting at foot with A, cast on 9 sts. Omitting popcorns on first row, work in stockinette st and complete as for front. Sew front and back together around head and across shoulders only.