

Welcome to Cisco Community! We're glad you're here.



Why join this community?

Search for information

Ask questions & get trusted answers

Learn from your peers & Cisco experts

Share your expertise



How do I join?

You need a Cisco or Webex account



Have an account?

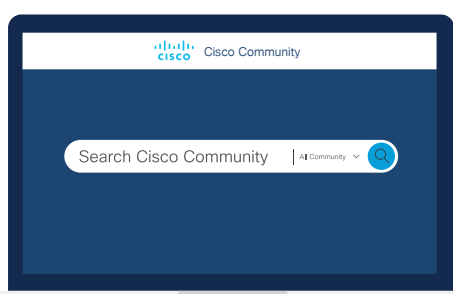
[Log in](#)



Need an account?

[Register](#)

Logged in? Here's what you can do now.



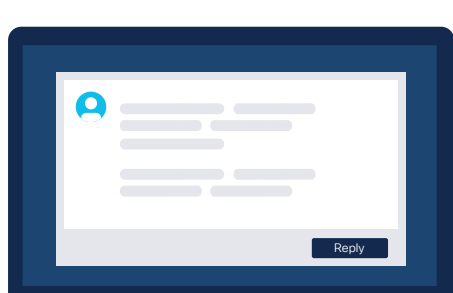
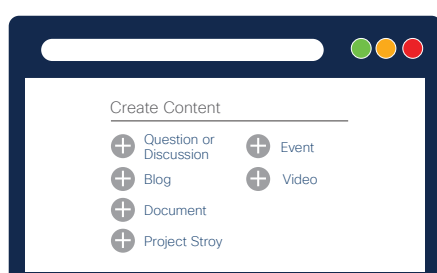
Search

Search the entire community or navigate to your area of interest for a more targeted search.

Pro-tip: Use the drop-down in the search bar to broaden or narrow options.

Ask a question

Click the plus sign in the "Create Content" section.

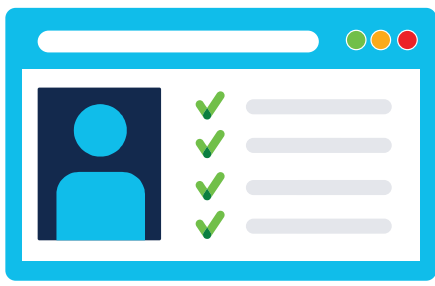


Answer a question

Click "Reply" on any discussion post to share your expertise.

Say "Thank You"

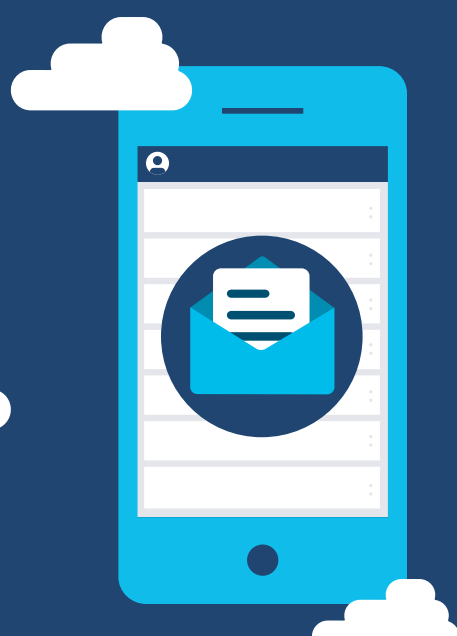
Click the "Helpful" star to say "thank you." Accept an answer as a solution to make it easier for other community members to find.



Create your profile

Tell your peers who you are and your areas of expertise.

Pro-tip: Upload a photo, write a bio, and add social media links.



Stay informed

- **Notification:** Subscribe to a board, label or post.
- **Board or label subscription:** You'll get an email notification when a new post is added.
- **Post Subscription:** You'll get an email notification when a reply or comment is added.

What else can you do in the community?

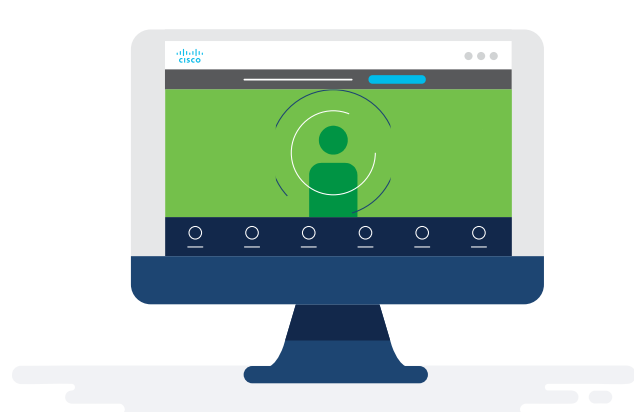
Share even more!

Under "Create Content," you can share about a project, create documents, and upload videos.



Connect with Cisco

Learn from experts and hone your skills by attending interactive community events.



Some of the topics you may be interested in include:

- Troubleshooting
- Best practices
- Product updates

[View event schedule](#)

Need more information?

[More community help resources](#)