

STATE ROUTE 509

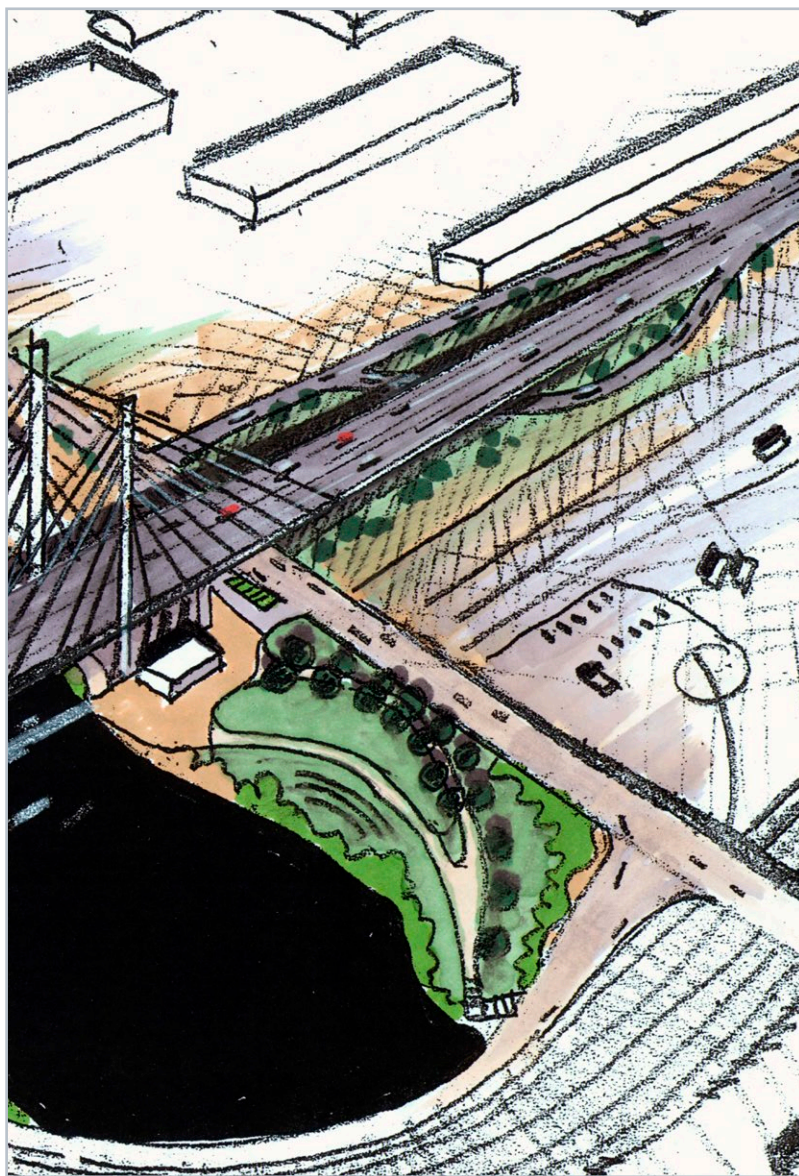
D & STREET



Project Improves Vehicle Access
and Supports Economic Growth

SUMMER 2012

The City of Tacoma is leading the design of a street and highway interchange at SR 509 and D Street. Once constructed, the interchange will improve freight movement into and from the Port of Tacoma as well as access to businesses on either side of the Thea Foss Waterway and to the Burlington Northern Santa Fe (BNSF) rail yard. In addition, the improved traffic flow will help relieve traffic congestion at Tacoma Dome events, generally expand opportunities for economic development in this historic industrial area, and provide redundant emergency vehicle access to the Thea Foss Peninsula. The project is entering the initial stage of selecting a preferred interchange design alternative and preparing the environmental documentation.



Project Improvements

The recommended Eastbound Undercrossing interchange configuration will create an at-grade westbound off-ramp for SR 509 at East D Street that terminates at a new signalized intersection just north of the existing Cable Stayed SR509 Bridge. The eastbound SR 509 on-ramp begins at the same signalized intersection, then crosses under SR 509 and merges onto the mainline from the south side of SR 509. This alternative was selected as the recommended configuration by WSDOT FHWA and the City on August 22, 2012.

Project Benefits

Supports Transportation

- Completes important link between SR 509 and Thea Foss Waterway Development Area and Tacoma Dome District
- Reduces transport time of overland freight to markets
- Creates redundant emergency access for I-5 and SR 99
- Provides unobstructed access to Thea Foss Peninsula

Facilitates Development

- Supports Intermodal Yard at existing BNSF Main Yard at D Street
- Increases access and capacity to serve future developments

Leverages Previous Investments

- Leverages \$24 million investment of D Street overpass
- Enhances competitive position of Port of Tacoma

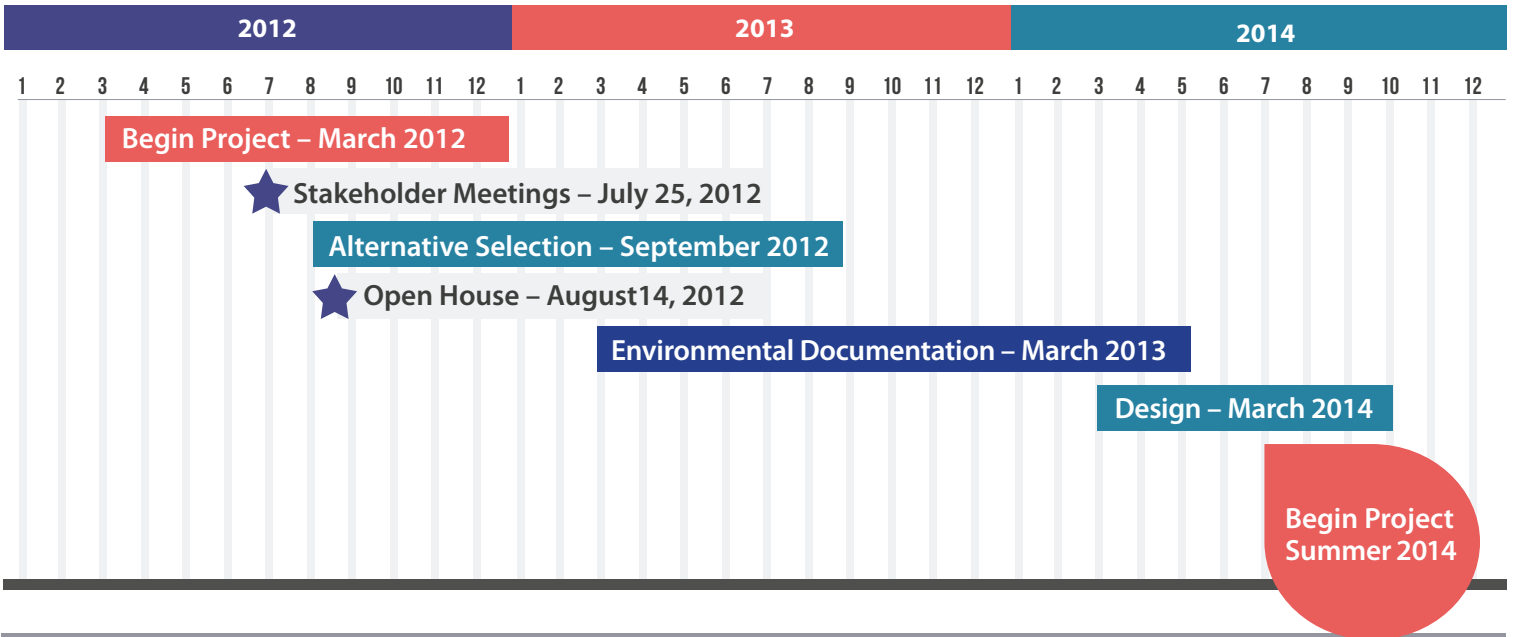
Offers Environmental Benefits

- Improves air quality through reduced truck start/stop cycles in Non-attainment area

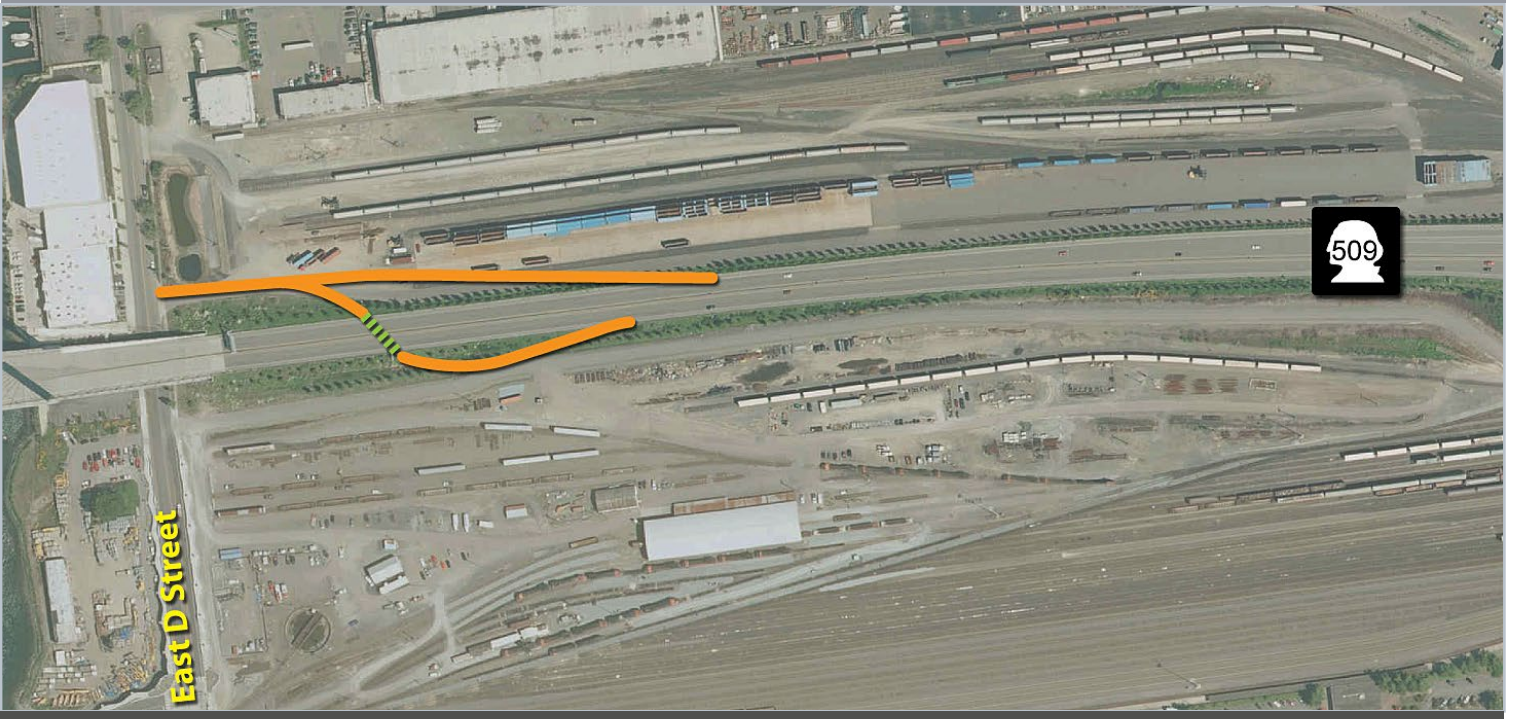
Project Agreements and Funding

- Right of way commitment by BNSF for ramps
- Puyallup Tribe/SSA Marine and City contributions of \$900K for IJR Phase I
- Private contributions of \$3.5M
- FMSIB \$6M grant pending IJR approval
- Construction estimate dependent on configuration and improvements necessary to obtain IJR approval

PROJECT TIMELINE



PROJECT LOCATION



Next Steps

- Complete traffic modeling
- Interchange Justification Report (IJR)
- NEPA Documentation

For more information please contact:

Sue O'Neill, City of Tacoma
253-591-5789 | soneill@ci.tacoma.wa.us

Tom Rutherford, City of Tacoma
253-591-5767 | trutherford@ci.tacoma.wa.us

www.cityoftacoma.org/SR509

