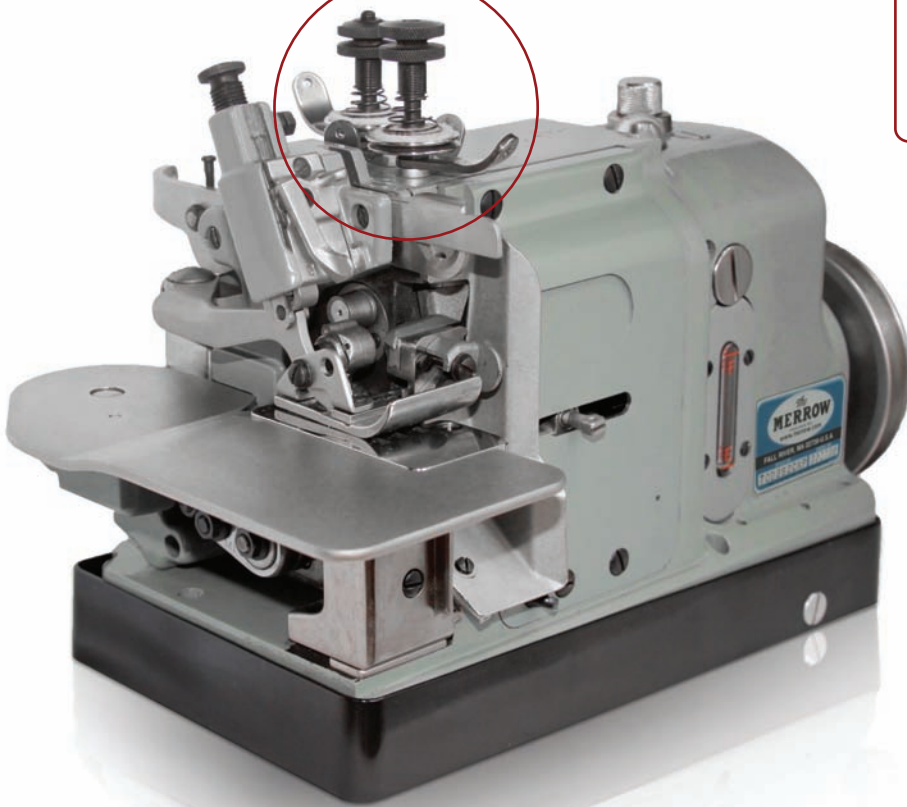


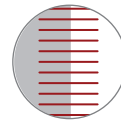
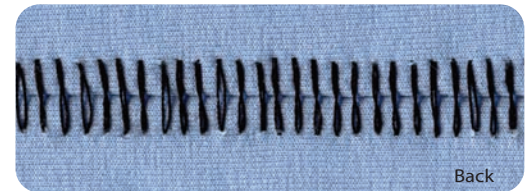
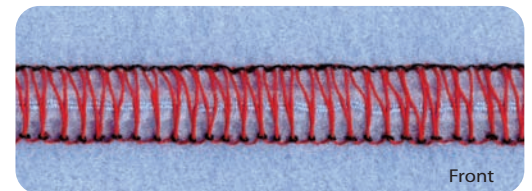
A SOLUTION FOR:

CONTINUOUS PROCESSING

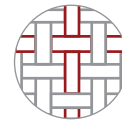


MERROW 70-D3B-2 LS SPECIFICATIONS

OPERATING SPEED:	2250 rpm
STANDARD STITCH ECCENTRIC :	6 spi
STITCH ECCENTRIC RANGE :	4-12 spi
STANDARD NEEDLE :	8SDT
NEEDLE RANGE:	3SDT - 8SDT
STITCH TYPE	503
STITCH WIDTH :	5/8" (16mm)
NUMBER OF THREADS	2



BUTTED
SEAM



WOVENS



2-THREAD

70-D3B-2 LS | BUTTED SEAM MACHINE

Industrial Two-Thread "Locked Stitch" Machine for a More Secure Seam

- Sews a Two-Thread Butted Seam
- Ideal for Napping Applications
- Second "Lock Stitch" Gives Added Security
- Table or Railway Mountable
- 10 Year Warranty
- **Designed and Engineered in the U.S.A.**
- **Parts and Service Available in 65 Countries**
- For More Information Visit www.merrow.com

CLASS

MODEL

OPTION

70 - D3B - 2

LS

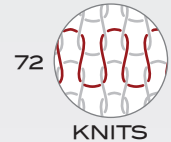
STYLE

MERROW has the Widest Variety of Sewing Machines for End-to-End Seaming.



WOVENS

70



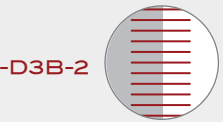
KNITS

72

CLASS

STYLE

OPTION



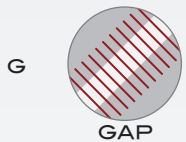
BUTTED SEAM

Machine produces a flat, one-thread butted seam (standard configuration).



STITCH MULTIPLIER

Machine is designed with a non-differential mechanism for increasing the stitch count, particularly at selvages.



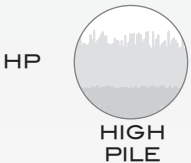
GAP

Machine creates a gap between the joined ends of the fabric.



ROLL

Machine creates a rolled seam at joined ends of fabric.



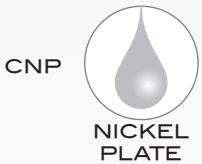
HIGH PILE

Machine is engineered for use on high pile fabric.



2-THREAD

Two-thread locked stitch machine.



NICKEL PLATE

Machine is chemically nickel plated for use in wet and harsh environments; extreme corrosion resistance.



RAIL

Machine is designed to be mounted on a railway sewing system.

	70	72
-D3B-2	■	■
-Y3B-2	■	■
G	■	■
R	■	■
HP	■	■
LS	■	■
CNP	■	■
RAIL	■	■

MERROW[®]
SEWING MACHINE COMPANY

502 BEDFORD STREET
FALL RIVER, MA 02720 USA
1001.800.431.6677
WWW.MERROW.COM

- Denotes Styles/Options that are INCLUDED on this Model
- Denotes Styles/Options that are AVAILABLE for each Machine Class